



1

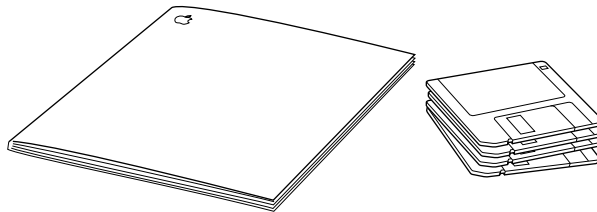
Getting Started



This chapter explains how to install and set up the Newton Press software. It also provides instructions for connecting your computer and Newton PDA and trying out the Newton Press application.

In this package

Check the contents of your Newton Press package. You'll find:



- The *Newton Press for Windows User's Guide*
- Four installation disks

System requirements

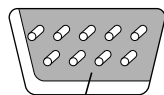
To install the Newton Press application and use it with a Newton PDA, you need

- An IBM PC or a compatible computer with an Intel 80386 or later version microprocessor
- A VGA display or better
- Windows 3.1, or Windows NT 3.5 or later, or Windows 95. (If you are using Windows 3.1, you must turn on your computer's file sharing and virtual memory functions. If they are not already on, see the Appendix for information about turning on these functions.)
- 4 megabytes (MB) of free random access memory (RAM) available
- a hard disk drive with 10 MB of available disk space
- an available serial port
- a serial cable (9-pin or 25-pin corresponding to the available serial port). This cable is not included with the Newton Press package. See “Connecting Your Newton PDA to Your Computer” for more information about obtaining a cable.
- a Newton PDA
- A mouse or pointing device

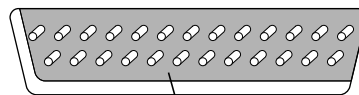
Connecting your Newton PDA to your computer

Before you can transfer information between the PC and Newton PDA, you need to connect the two machines with a serial cable. Newton Press communicates with the Newton PDA through a serial port on your PC.

PC serial ports come in two sizes—9-pin and 25-pin. On some computers a serial port may be labeled COM1, COM2, COM3, COM4, or SERIAL. For more information on setting serial port settings, see “Getting Your Computer Ready” later in this chapter.



9-pin serial port



If your computer has a 25-pin serial port, you can use an adapter to connect.

To connect your Newton PDA to your PC, you need a serial cable with a 9-pin-to-8-pin connector. If your serial port has a 25-pin connector, you also need a 9-pin-to-25-pin adapter.

If you do not have a cable or adapter, Apple can provide one for you. See an Apple-authorized dealer for more information.

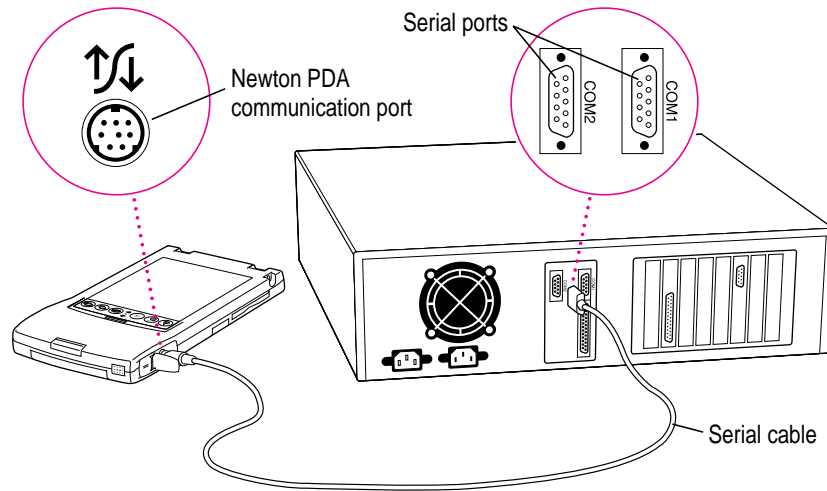
Attaching the cable

To connect your Newton PDA and PC by cable:

- 1 Choose an available serial port on your PC.**
- 2 Connect the end of the cable with 9 holes to the appropriate port.**

If you have a 25-pin serial port, use the 9-pin-to-25-pin adapter. Push the smaller end of the adapter into the 9-hole end of the cable. Then plug the larger end of the adapter into a matching 25-pin serial port.

- 3 Plug the other end of the cable into the Newton PDA's communication port.



That's it! You can go on to “Installing Newton Press,” next.

IMPORTANT You can use the Newton Press application to create and format books on your computer without connecting a Newton PDA to your computer. To install a book package on a Newton PDA, however, you must connect it. To complete the installation procedure given here and to test whether Newton Press is installed correctly, be sure to follow the connection instructions given next.

Installing Newton Press

Before your computer can communicate with your Newton PDA, you need to install Newton Press on your computer. You'll need the disks that came with this manual.

The Newton Press installation program, SETUPEXE, installs the Newton Press files. For information about the files installed on your hard disk, see the Readme file installed with your Newton Press software.

Before you begin to install the Newton Press software, you should verify that your system meets the necessary minimum requirements described in "System Requirements," earlier in this chapter.

To install the Newton Press software:

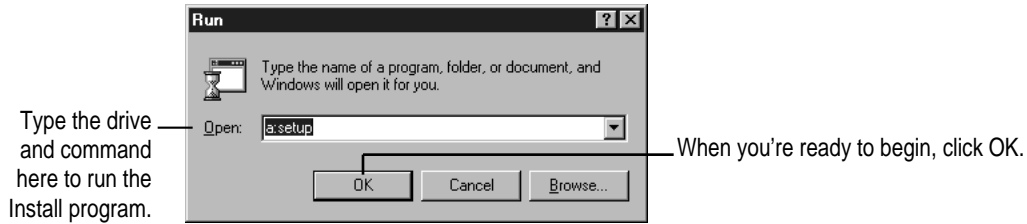
- 1** Place the *Install* disk in the appropriate floppy disk drive.
- 2** If you have Windows 95, click the Start button and then choose Run. If you have another version of Windows, in the Program Manager, choose Run from the File menu.

A window appears.

IMPORTANT The illustrations used in this manual show Windows 95 versions of the application. If you are using a different version of Windows, the windows you see may look different but the procedures are nearly the same.

3 Type a:\setup and choose OK.

If you are using the B drive, type b:\setup instead.



4 Follow the on-screen instructions.

Newton Press is installed in the Press directory (unless you specified a different location). Depending on the version of Windows that you're using, you may be asked to restart Windows. It's important that you restart Windows so that communications can work properly.

You'll find a directory named Press on your hard disk.

Installation troubleshooting

If the Installer can't complete the installation, you'll see a message. Here are some ways to fix some common problems:

- Make sure that you have the correct hardware or system software. (If you don't, the Installer tells you what you're missing.)
- Make sure you have enough free disk space on your hard disk. If necessary, delete old files you no longer need to make more room. The Newton Press application requires 6.75 MB of free hard disk space (10 MB for the Window's 3.1 version).

Starting Newton Press

Now that you've installed the computer software, you must set your computer software and the Newton PDA to communicate.

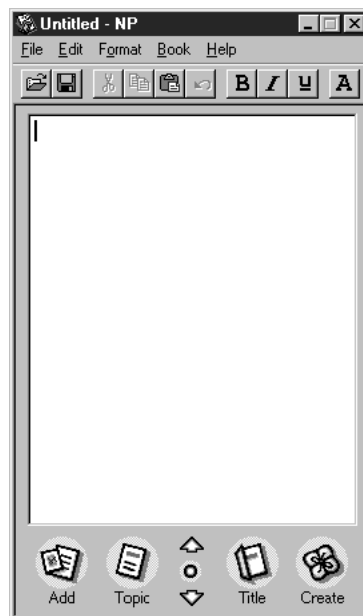
Getting your computer ready

After connecting your computer and Newton PDA, you next must open the Newton Press application program and specify the communications port that you have used. You don't need to specify the port again unless you change to a different port later.

To set the Newton Press connection preferences:

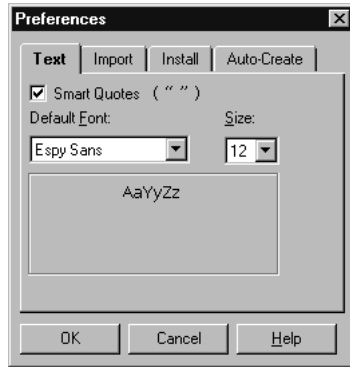
- 1 **Double-click the Newton Press icon to open the application.**

The Newton Press screen appears.



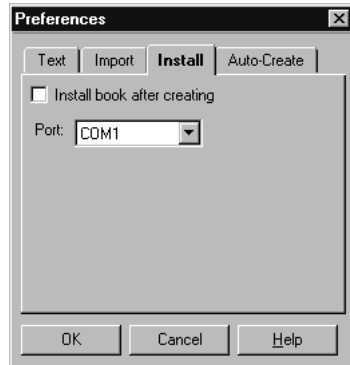
2 Choose Preferences from the Edit menu.

The Preferences window appears.



3 Click the Install tab.

The Install options appear.



- 4 If the Port option isn't set to the correct port, click the Port drop-down list and select the communications port you want to use.
- 5 Click OK.

You've now set up the Newton Press application to communicate using your selected communications port.

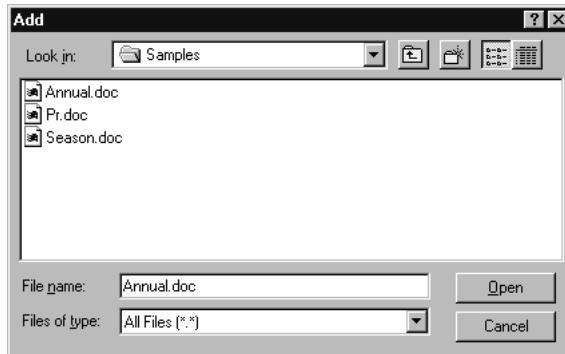
Next, you'll start creating a book by adding some text to an empty document.

Creating a book

- 1 Click the Add button in the Newton Press window.

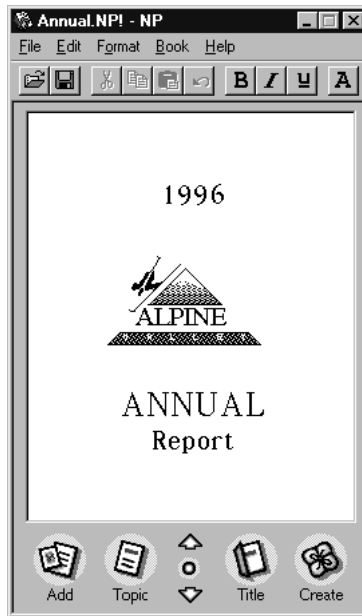


The Add window appears.



- 2 Select the Annual file in the Samples directory, and click OK.

Newton Press adds the Annual Report file to the book, formatting it for display on a Newton PDA screen.



- 3 Inspect the newly added text by clicking the Up and Down arrows on the Newton Press window to move from page to page.

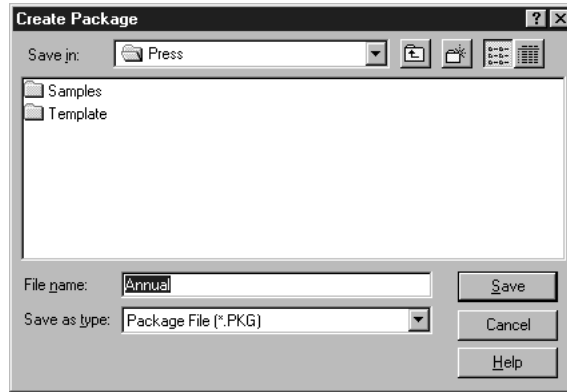
You can browse the information that you've added to this book.

The information that appears on the screen, however, is not yet a Newton package that can be installed on a Newton PDA. Now you'll save the book as a package and then install it on your Newton PDA.

4 Click the Create button.



The Create Package window appears.



5 Type a new name for the package, or use the one that already appears in the File Name box, and click Save.



Newton Press saves the Newton book as a package in the Press directory. It also automatically prepares to install the package on your Newton PDA. (You can turn this automatic installation feature off, if you wish. See Chapter 7, “Setting Preferences,” for more information.)

You’re now ready to set up the Newton PDA to communicate with the computer.

Getting your Newton PDA ready

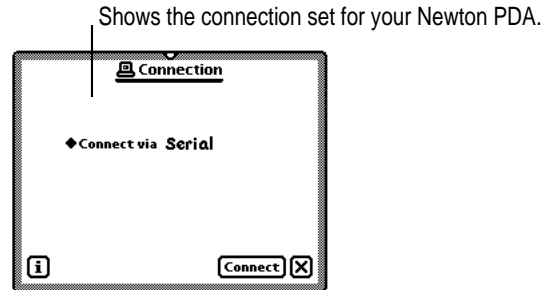
To get your Newton PDA ready to receive a new package, you must specify the type of connection you've made between the device and your computer.

To set up and open a connection on the Newton PDA:

- 1 Turn on the Newton PDA.
- 2 Tap the Extras Drawer .
- 3 In the Extras Drawer, tap Connection .

You may have to show all icons to see the Connection icon.

A slip appears. This slip shows the type of connection currently set for your Newton PDA.



Note: If your Newton PDA uses a version of the Newton operating system earlier than 2.0, the slip may look different.

- 4 If the type of connection that appears in the slip is not correct, tap “Connect via” to change the connection. If it is correct, skip to step 6.

A list of connections appears.

- 5 Choose Serial.

IMPORTANT If your Newton PDA uses a version of the Newton operating system earlier than 2.0, choose the “Macintosh Serial” option. *Do not* choose the “DOS or Windows PC” option.

- 6 Tap Connect.

Your computer and Newton PDA establish a connection, and Newton Press installs the new Newton book package in the Extras Drawer.

Locating the new book

You can now open and view the new book package on your Newton PDA.

1 On the Newton PDA, tap the Extras Drawer.

A new book with the title you gave it appears in the Extras Drawer.

2 Tap the book to open it.

Congratulations! You've created and installed your first book on a Newton PDA.

Review the Readme file for important late-breaking information about Newton Press. For more information about how to review the book, see Chapter 8, "Viewing Your Book on a Newton PDA."

Problems?

If the Newton book didn't transfer to your Newton, make sure that

- the connections between your Newton PDA and the computer are properly attached
- you installed the software and set up the computer and Newton PDA correctly, as described earlier in this chapter
- you have specified the correct port in the Preferences window in the Newton Press application on your computer, as explained in "Getting Your Computer Ready"
- you have opened a connection using the Newton PDA, as explained in "Getting Your Newton PDA Ready"
- you have enough available memory on your Newton PDA

If problems persist, see Chapter 9, "Troubleshooting," for solutions to common problems encountered when installing software or installing books on a Newton PDA.

Exiting Newton Press

When you no longer want to use Newton Press, you can exit the application and unplug the Newton PDA from its connection to the computer.

To exit the Newton Press application:

- **On your computer, choose Exit from the File menu to close the Newton Press application.**

If you have a book open that you haven't saved, the application displays an alert box asking if you want to save your work. Click Save to save your work or Don't Save to discard the book.

To unplug the Newton PDA:

- 1 Turn off the computer and the Newton PDA.**
- 2 Unplug the end of the cable connected to the Newton PDA.**

You can also unplug the cable from the computer connection, if you want.

2

Creating a Book



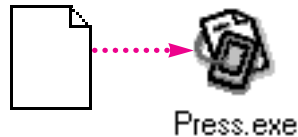
Newton Press provides fast and flexible ways of creating Newton books. With the Newton Press application you can

- create books automatically by dragging documents to the Newton Press icon and have them automatically installed on a Newton PDA
- create an empty Newton Press document to start a new book
- move from page to page through a book or jump to a specific page
- edit a book, and copy and paste text and graphics
- add documents from your computer applications to a book
- add graphics, including charts, clip art, company logos, and more, to a book
- drag documents and graphics to the Newton Press window to add them to a book
- record information about a book, including title, author, and unique ID number or ISBN number
- save and open your work in progress

For information about formatting books, see Chapter 3, “Formatting Your Newton Book.”

Dragging a book onto a Newton PDA

Once your computer and Newton PDA are connected, you can quickly move information from your computer to your Newton PDA. Drag a document onto the Newton Press application icon. The application automatically creates a fully formatted book. After creating the book, the application installs it as a package on the Newton PDA.



IMPORTANT You must have the “Install book after creating” option selected in the Preferences window to install books by dragging and dropping. For more information, see Chapter 7, “Setting Preferences.”

To drag a document onto a Newton PDA:

- 1** Connect the Newton PDA to the computer.
- 2** On your computer, drag a document onto the Newton Press icon.

The Newton Press application opens, adds the document to a book, and then prepares to install the book. A message appears telling you to establish a connection using your Newton PDA.

- 3** On your Newton PDA, set up the connection by opening the Extras Drawer and tapping Connection.
- 4** Specify the type of connection used by the Newton PDA, and tap Connect.

The Newton PDA and computer establish a connection, and you see a progress message as the book package is transferred to the Newton PDA.

You can also select several documents in the File Manager and drag them onto the application all at once.

Creating a new book

In addition to dragging information to the application, you can create new books by opening the Newton Press application. When the application opens, it creates a new empty document.

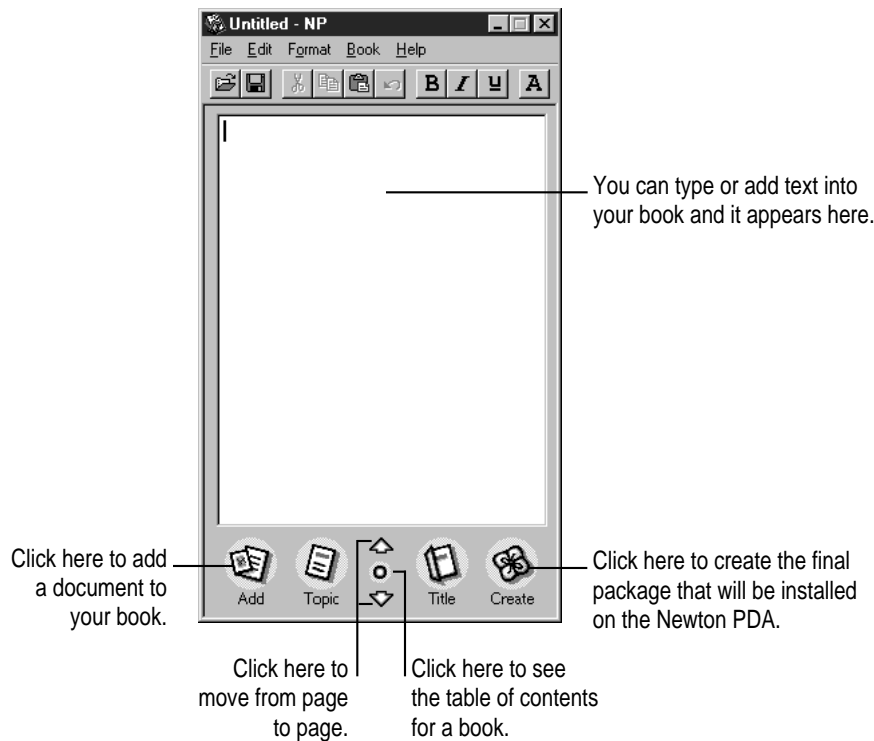
If Newton Press is already open, and you have a Newton book open, you save the current book and then open a new one.

To create a new empty book when Newton Press has a document open:

- **Choose New from the File menu.**

If a Newton book is already open and you haven't saved your changes, Newton Press asks if you want to save your work. Click Save to save the currently open document.

The new book appears in an untitled empty window.



Text you type appears at the insertion point. Text is automatically formatted to fit the size of a Newton PDA screen, providing an accurate picture of how your book will look.

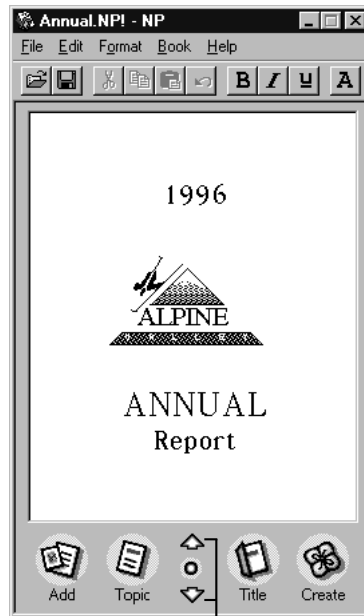
You can select and edit text using standard editing procedures. You can select an entire document and change its font characteristics and text alignment by choosing the Select All command in the Edit menu. You can cut, copy, and paste text and graphics and choose font characteristics, alignment, and other formatting options. For more information about formatting your document, see Chapter 3, “Formatting Your Newton Book.”

To edit text:

- **Select the text you want to change and type or choose commands from the menus to change it.**

Navigating in your book

As you create a book, the application automatically divides it into pages that fit within a Newton PDA's screen. You can move from page to page or jump directly to the page you want.



Click these arrows to move forward or backward page by page.

To move from page to page:

- Click the down or up arrow to move to the next or previous page.

To move to a specific page:

- 1 Choose **Go to Page** from the **Book** menu.

The **Go to Page** window appears.

- 2 Type a page number and click **Go To**.

You can also click the **Last Page** button to go to the end of the document.

If you have created a table of contents, you can also use it to go to specific pages. For more information about creating and using a table of contents, see Chapter 4, “Creating a Table of Contents.”

Copying and pasting

You can copy text or graphics from other documents on your computer and paste them into a book. Before pasting, click in the book to place the insertion point where you want the copy to appear. For more information about placing graphics in your book, see “Bringing Graphics Into a Book” later in this chapter. For information about adding text, see the next section, “Bringing Documents Into a Book.”

Note: You cannot paste text and graphics into a book at the same time.

Bringing documents into a book

After opening a book window, you can build books quickly by adding documents created with other applications. If you have documents such as sales forms, price tables, or product listings created on your computer, you can add them to a book without reentering information. The added document is automatically reformatted by the Newton Press application, preserving as much of the original format characteristics as possible.

IMPORTANT If you are going to add a document to a Newton Press book that will require many formatting changes—for example, many changes of fonts or adjustments to tables—you may find it easiest to use the formatting features of the original application to change the document before adding it to your Newton Press book.

The Newton Press application can bring in files created by many commonly used applications. For more information about the kinds of documents you can add, see the Readme file installed with the Newton Press software.

Adding a new document

Before you add a document, make sure that the text and any graphics within the document can be added successfully. Newton Press can add many types of documents that incorporate text and graphics. However, certain applications create text or graphics that the Newton Press application can't add. For example, if a word-processing document contains tables of information formatted in cells, the Newton Press application can't interpret this type of table. You must convert such tables to text separated by tab stops and the application can then add the tables to a book. If a word-processing document has footnotes, Newton Press will not add them.

Newton Press can add several types of graphics. (For a list of the graphic formats that Newton Press can import, see the Readme file installed with the Newton Press software.) If a document contains graphics in a special format that Newton Press can't import, you should eliminate them from the document you want to add to avoid importing problems. For more information about adding graphics, see "Bringing Graphics Into a Book" later in this chapter.

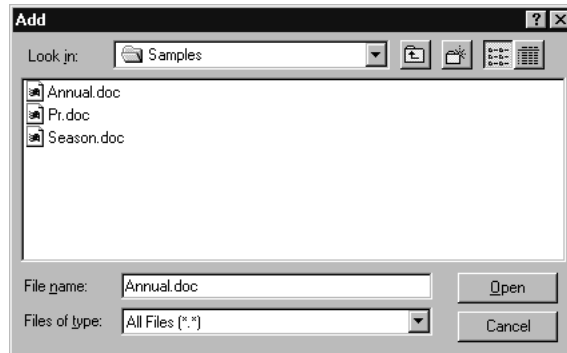
When you add a file, the Newton Press application automatically checks the text to see what fonts are used. If the application detects fonts that aren't available on a Newton PDA, the application allows you to choose suitable fonts to be substituted. For more information about font substitution, see "Using Fonts" in Chapter 3.

A document is always added to the end of the book. It's a good idea to plan the order in which you want to add files to your book.

To add a document to a book:

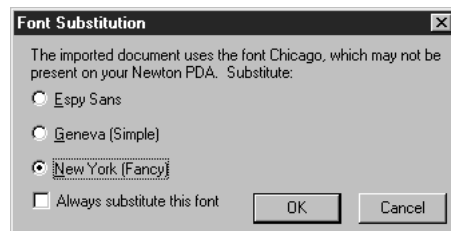
- 1 With a book open in the Newton Press application, click the Add button or choose Add from the File menu.

The Add window appears.



- 2 Select the name of the document you want to add, and click Open.

The Newton Press application begins to add the document to your book. If the application finds fonts that are not available on a Newton PDA, a window appears asking you to select a Newton PDA font to substitute.



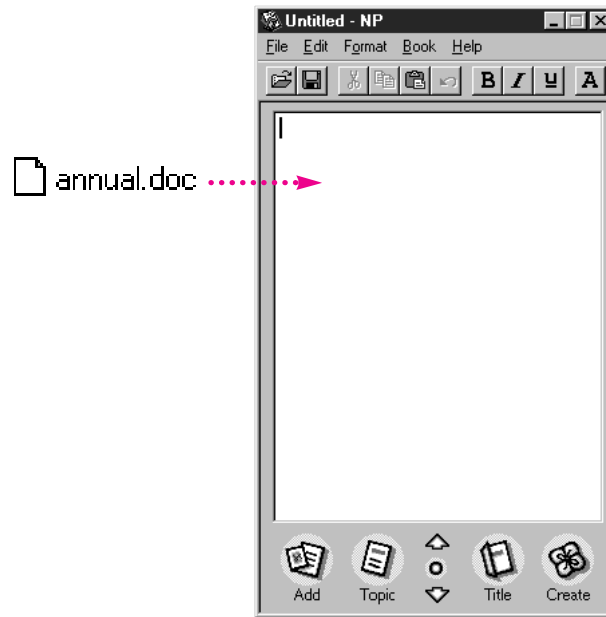
Click the button for Espy Sans, Geneva, or New York and click OK. If the window appears again, asking you to substitute another font, repeat the procedure. For more information about font substitution, see Chapter 3, “Formatting Your Newton Book.”

The added document appears in the Newton Press application window.

Note: When you add a file, the name of the file is also added to the table of contents. If you don't want the file name added to the table of contents, you can turn this option off. For more information, see Chapter 7, "Setting Preferences," and Chapter 4, "Creating a Table of Contents."

Dragging a document to a book for editing

To add a document to a book quickly, you can drag a document icon into the open Newton Press window. Newton Press automatically adds the document, formatting it for display on a Newton PDA.



To quickly add a document to a Newton Press book that you are working on:

- **Drag a document into the Newton Press window.**

If the Font Substitution window appears, select the font you want and click OK.

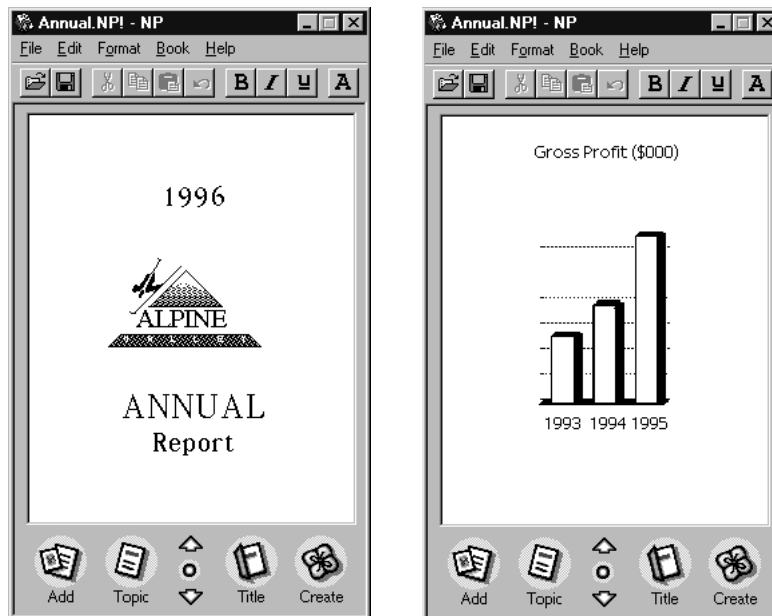
Adding multiple documents to a book file

You can add multiple documents to a book. Each time you add a document, the Newton Press application adds the new document to the end of the book.

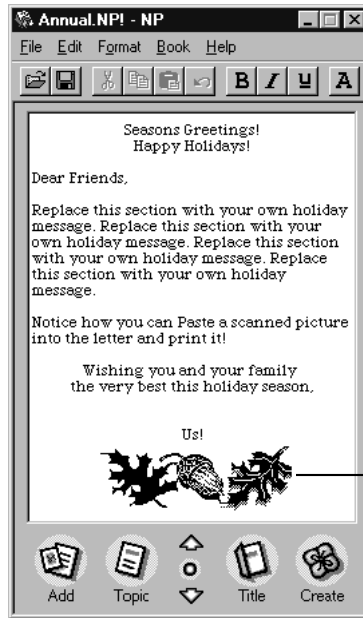
As you add documents, remember to save your work in progress periodically. Should a power outage or other problem arise, you can open your last version of the book without losing your work. For information about saving your work in progress, see “Saving and Opening Your Book” later in this chapter.

Bringing graphics into a book

You can place graphics in a book to illustrate concepts, provide charts, include a company logo, spur visual interest in your document with clip art, and more.



Your graphics must be in a file format that Newton Press can use. Newton Press can open bitmapped files, that is, graphics created as dots or pixels with an application program such as PC Paintbrush. It can also open several other file formats. For a list of available translators, see the Readme file installed with the Newton Press software.



This is a clip art image.
You can use clip art in your books.

Before inserting a graphic into a book, you can use the application the graphic was created in to resize or scale the graphic to fit within the dimensions of the Newton Press window. You can also place images that are larger than the screen in a book, and the reader on the Newton PDA can scroll to see the entire image.

You can add documents that have graphics in them and the graphics will appear in the book correctly if a file translator is available for the graphics file format. If no file translator is available, you should delete the graphics from the document or convert them to bitmapped images or to another file format that Newton Press uses.

Tip: Many graphics applications allow you to save images as bitmapped files. You can also convert some graphics to bitmapped images by producing screen captures of an image. Press Print Screen on your keyboard to capture an image of your entire screen. You can then open this image in a paint application and select and resize the graphic. You can also create screen captures using special screen capture applications.

You can copy an image from your document or graphics application and paste the image directly into the Newton Press book. You can also add it to a book by choosing the Add command in the File menu.

To copy and paste a graphic in a book:

- 1 Select the graphic image in a document.**
- 2 Choose Copy from the Edit menu.**
- 3 Open the book and click the page where the image should appear.**
- 4 Choose Paste from the Edit menu.**

To add a graphic to a book:

- 1 Click the Add button or choose Add from the File menu.**

The Add window appears.

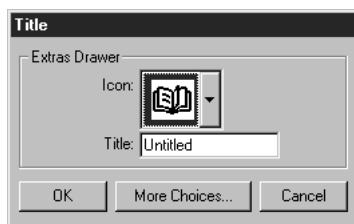
- 2 Select the name of the image you want to import and click OK.**

The graphic is added to the end of the current book.

Naming and identifying a book

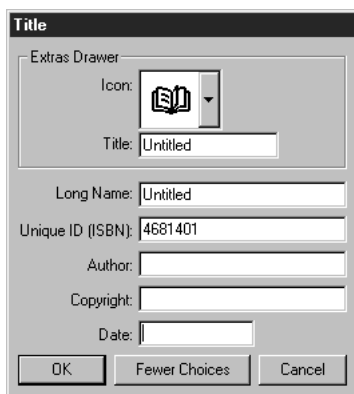
You can record information about your book, such as a title, the name of the package, the author of the book, and other information. You can also select the look of the icon that represents the book on a Newton PDA.

To name the book and pick an icon, click Title in the Newton Press window or choose Title from the Book menu. The Title window appears.



Choose an icon from the drop-down list at the top of the window. (Choosing an icon only changes the look of the icon; it does not change the content or file format of the book.) Type a name for the book in the Title box. The title is the name that will appear for the book in the Extras Drawer on the Newton PDA.

You can also enter additional information about a book when you click More Choices. The Title window expands and you can type a long name, an ID, ISBN, or other identifying number, the name of the author, copyright information, and the date.



Note: Be sure to give your books a unique title and long name. You cannot install a Newton book package on your Newton PDA if a package with the same title and long name already resides on the Newton PDA.

To specify the book title and other identifying information:

- 1 Click **Title** in the **Newton Press** window or choose **Title** from the **Book** menu.
- 2 Type a book title and choose an icon, if you want.

- 3 Click **More Choices** when you want to enter additional information about the book, and add your information.
- 4 Click **OK**.

Saving and opening your book

As you work on your book, it's a good idea to save your work as you go. Saving your book creates a file that you can open later and change with the Newton Press application. Saving your work this way ensures that you have a backup copy of your book should you need one. This work file is not a package that can be downloaded to a Newton PDA for viewing. It is a file you can open and continue working on until your book is completed. Once the book is finalized, you then create a book package that can be installed on a Newton PDA.

Saving your book

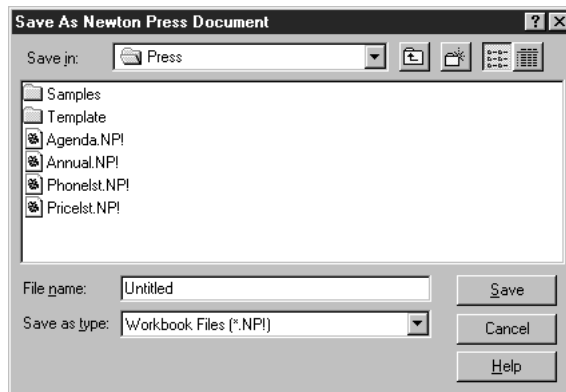
To save your book:

- 1 Choose **Save** from the **File** menu.

If you have previously saved the document, Newton Press saves the latest version for you, and you can continue working.

If this is the first time that you are saving the document, the **Save** window appears.

- 2 Type a name for your book in the **File Name** box.



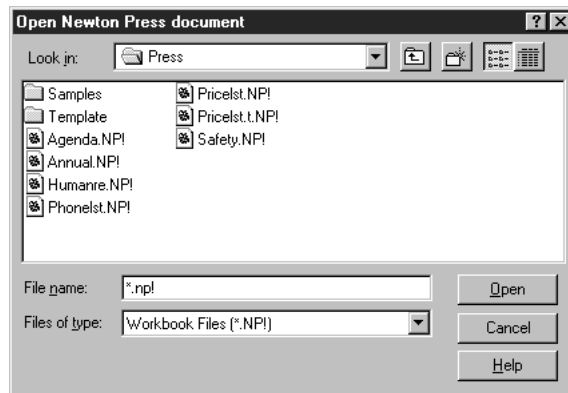
- 3 Choose a location for your file on your hard disk or in a directory, if you want.
- 4 Click Save.

Opening your book

You can open a Newton Press book that you have saved by double-clicking it in the Explorer. You can also open it from within the Newton Press application.

To open a book that you've saved from within the application:

- 1 Choose Open from the File menu.



A window appears.

- 2 Select the file you want to open, and click Open.

3

Formatting Your Newton Book

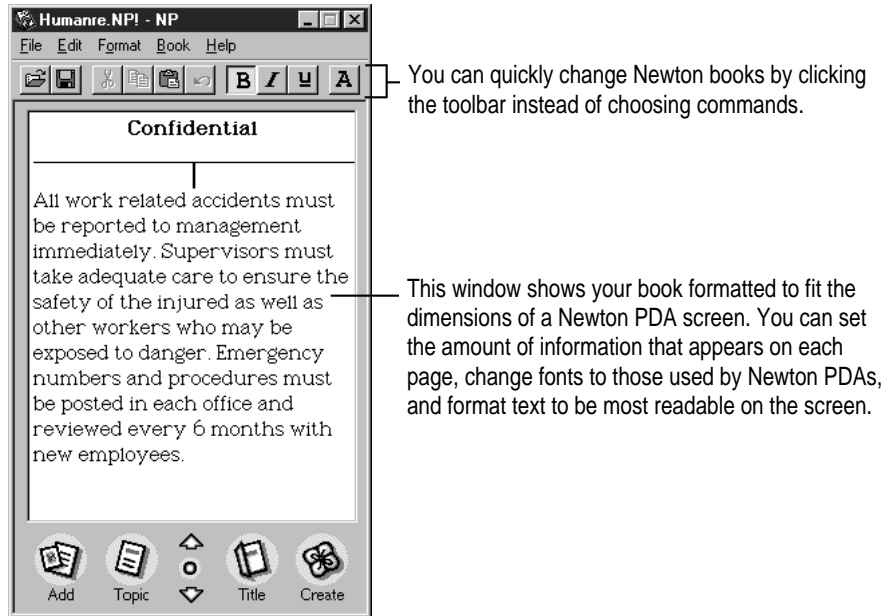


You can enhance the appearance of a Newton book by formatting it for display on a Newton PDA. With the Newton Press application, you can

- divide and combine pages by inserting or removing page breaks
- create a heading, such as “Confidential,” that appears at the top of all pages
- use the fonts, font sizes, and font styles used by a Newton PDA
- center text or align it left or right (you can also align graphics)
- align text using tab stops to create lists and tables
- create borders around paragraphs of text and graphics
- make text or headings stand out by creating white text on a black background

About the Newton Press application window

The Newton Press application window shows how a book will appear on a Newton PDA.



The application automatically formats text for display on a Newton PDA, setting text margins to the proper line length and breaking a document into pages that fit a Newton PDA screen.

As you work on a document, you can move from page to page, typing, editing, and formatting the pages as you go. You can also select the entire document with the Select All command from the Edit menu and make changes.

The formatting that you can perform with Newton Press matches the abilities of the Newton PDA. For example, text can appear in three fonts (Espy Sans, New York, and Geneva), because these three fonts are available on Newton PDAs.

When you add documents to a Newton book, the information is formatted automatically to fit the Newton PDA screen. Newton Press preserves formatting characteristics of the original document, such as font, font size, and font style, whenever possible. If the document uses fonts unavailable on a Newton PDA, Newton Press can automatically substitute Newton PDA fonts, if you want.

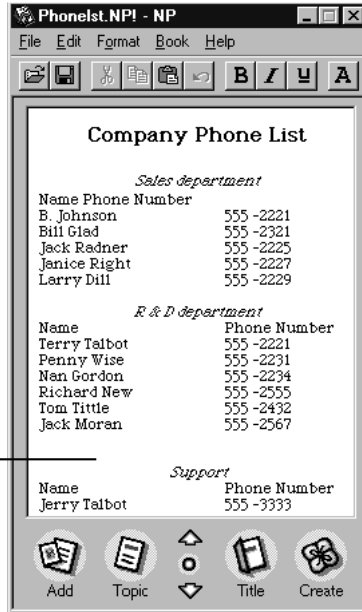
If a document will require many small formatting changes after it is added to Newton Press, it's sometimes easiest to format the document using the original application.

You'll find template files that are preformatted for the Newton PDA screen installed with your Newton Press software. Template files are provided for many of the most commonly used computer applications. You can copy and paste your document into a template file and then make necessary formatting changes. You can then add the document to Newton Press. For more information about using templates and the screen dimensions of a Newton PDA, see the Readme file installed with your Newton Press software.

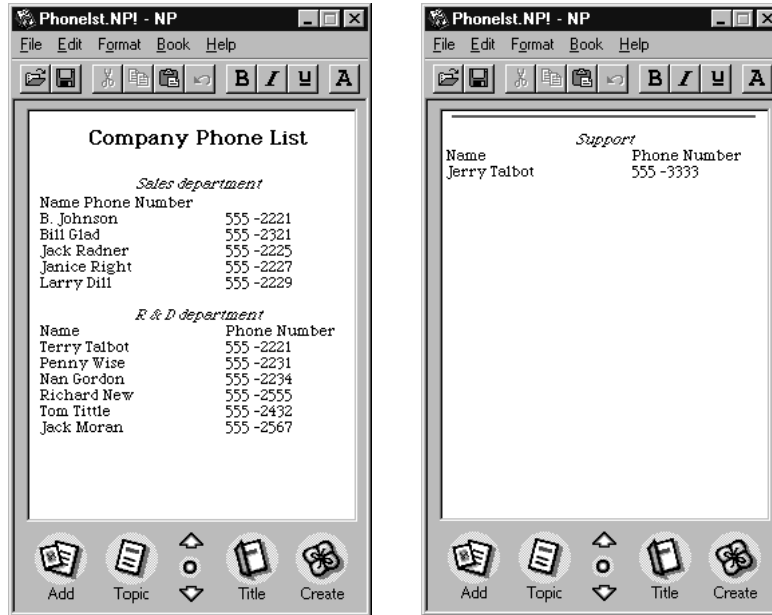


Inserting a page break

You can specify the amount of information that appears on a page by setting a page break. For example, if too much information appears on a page, you can divide the page at a specific spot. You can also insert page breaks so that specific parts of a document begin at the top of a page.



When you choose insert Page Break, Newton Press starts a new page, moving the text to the next page.



After entering or adding the text of a book, you can then page through it, dividing pages to provide the most readable layout.

To insert a page break:

- 1 Click in the text where the page should start.
- 2 Choose Insert Page Break from the Format menu.

Removing a page break

Should you need to combine pages later, you can open a page and choose Remove Page Break from the Format menu to combine the current page with the one before it.

To see where page breaks are in a document, choose Show Indicators from the Format menu. A thin line appears at the top of each page started by a page break.

To remove a page break:

- 1 **Go to the page that has the page break marker.**

Choose Show Indicators from the Format menu to display page break markers, if necessary.

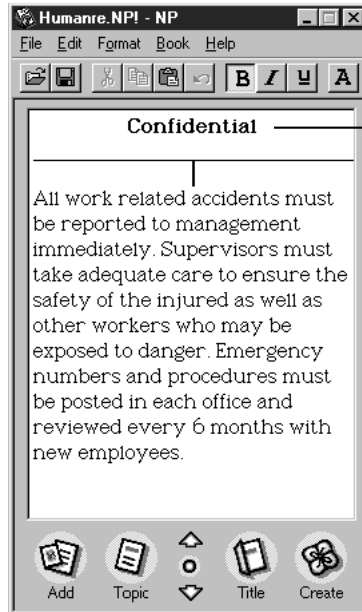
- 2 **Click in the top-left corner of the page where the line appears.**

Your insertion point should be in the first character position at the top of the screen. When it is, the command Remove Page Break becomes available in the Format menu.

- 3 **Choose Remove Page Break from the Format menu.**

Creating a header

You can create a single heading that appears at the tops of all pages. For example, you can use such a header to display the word “Confidential” throughout a book. You can only have one header per book.



This is a header. You can add a header, editing the text as you wish. You can also choose the font and alignment characteristics you want.

To create a header for a book:

- 1 **Choose Header from the Format menu.**

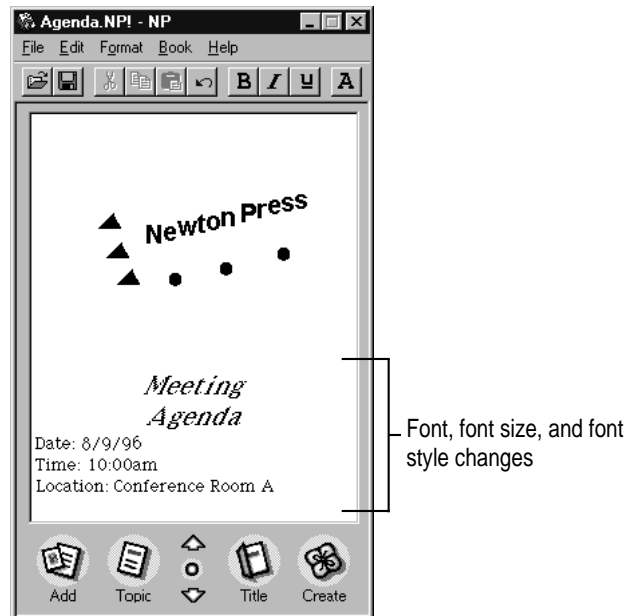
An untitled header appears at the top of the screen.

- 2 **Select the header and edit the text.**

To remove the header later, choose Header again from the Format menu.

Using fonts

Newton Press displays three fonts: New York, Geneva, and Espy Sans. Therefore, all the text in a book must be in one of these three fonts.



To change the font:

- 1 **Click to create an insertion point or select the text you want to change.**

You can also choose Select All from the Edit menu to select an entire document and change the font characteristics and text alignment of the document. (You cannot make other formatting changes to the entire document.)

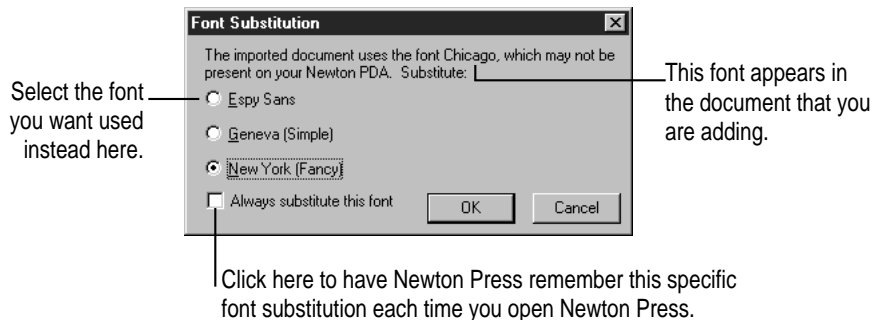
2 Choose Fonts from the Format menu.

A window appears.

3 Choose the font, size, and style you want and click OK.

Adding documents that use different fonts

When you add or paste a document into a Newton Press book, the application checks the fonts used. If fonts other than Espy Sans, New York, or Geneva appear in the added text, the Font Substitution window appears. You can use this window to specify which of the three Newton PDA fonts should be used to replace other fonts.



When the window appears, select one of the three Newton PDA fonts that you want substituted, and click OK. Newton Press automatically makes this font substitution each time it encounters this font. It makes this substitution as you add text and create new book documents until you quit the application. If you quit and reopen Newton Press, the font substitution dialog box appears again when it encounters this font.

To set the window so the font you chose is the default substitution for a specific font, click the “Always substitute this font” checkbox. If you quit and reopen Newton Press, Newton Press displays the Font Substitution window preset with your font selection the first time it encounters the font.

After you click OK, the Font Substitution window may reappear showing another font that needs substitution. Again, select the Newton PDA font you want to substitute.

If you'd like to always use your current font substitution settings without having to see the window, you can set a preference so that the window no longer appears and font substitutions are always made automatically. For more information about setting the Font Substitution preference, see Chapter 7, "Setting Preferences."

To substitute fonts in imported text:

- 1 **Click the Add button or choose Add from the File menu.**

The Add window appears.

- 2 **Select the document you want to add, and click OK.**

The Font Substitution window appears.

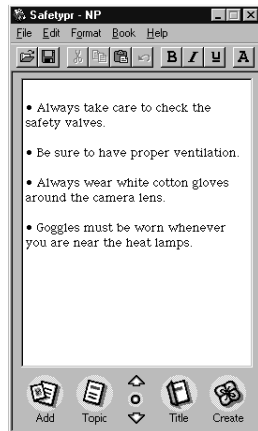
- 3 **Choose the font that you want to use.**

- 4 **Click OK.**

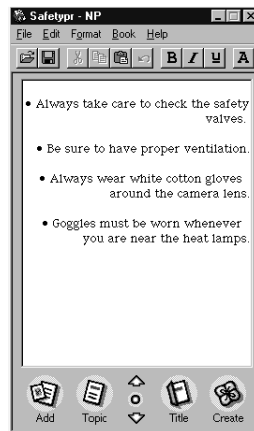
Aligning text

You can change the alignment of text within the margins of the book. You can left-align text, center it, or align it on the right margin.

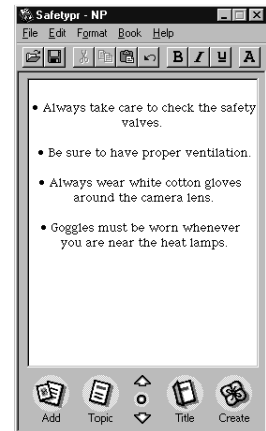
You can align a single paragraph or a group of paragraphs. You cannot change the alignment of individual lines within a paragraph.



Left aligned



Right aligned



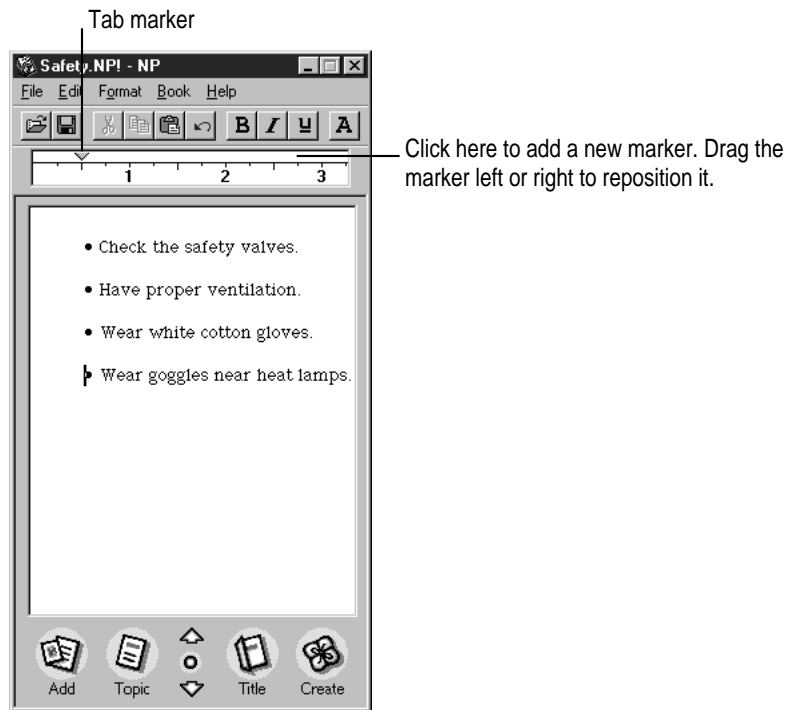
Centered

To change text alignment:

- 1 Click the paragraph or select the paragraphs that you want to align.
- 2 Choose **Align Left**, **Align Center**, or **Align Right** from the **Format** menu.

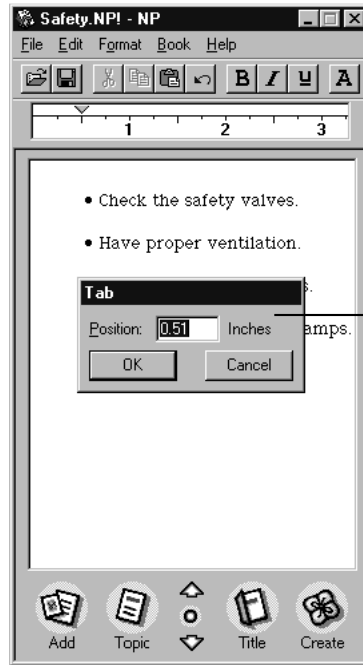
Using tabs

You can set tabs for your text to create lists and tables of information. When you choose **Show Tabs** from the **Format** menu, the **Tab ruler** appears. You use this ruler to set tabs for the currently selected text. To see the tab markers for a specific paragraph, click the paragraph.



When you add text from another application to a book document, Newton Press preserves tab spacing, if possible. After adding text, you can select it and adjust the tab spacing.

You can also precisely position tab stops on the ruler. Double-click a tab marker on the ruler and a Tab window appears. Type a number and specify “in” for inches, “cm” for centimeters, “mm” for millimeters, or “pt” for points to indicate the measuring system you’re using.



Type the position of the tab marker here.

To set tab stops:

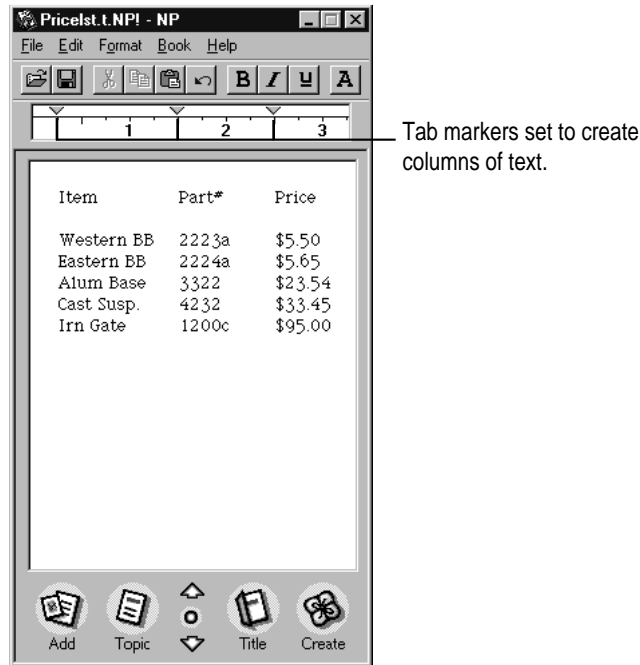
- 1 Click where you want to create tabbed text, or select the text you want to set up with tabbed spacing.
- 2 Choose Show Tabs from the Format menu.

The Tab window appears.

- 3 Click the ruler to set a tab. Drag a tab left or right to move it, or drag it from the ruler to remove it.

Creating tables

You can create tables in a book by first setting up your tab stops and then entering the table information.



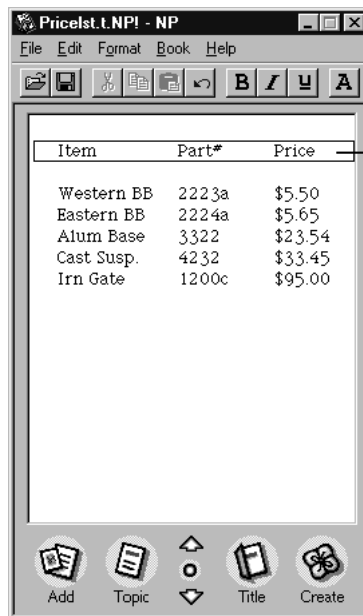
You can also add documents that have tables. If you're adding a document with tables, the tables must be formatted as text separated by tab characters. After adding such a document, you can select the table and arrange the tab stops to reformat the table to fit the screen.

When the tables are wide with many columns of text, it's often a good idea to reformat tables in the original application to fit within the Newton PDA screen before you add them to a book.

Some applications create tables as matrices of cells that hold the table information. Tables formatted as cells will not be imported correctly into a Newton Press document. To prepare such a document for importing, use the original application to recreate or convert the table into text separated by tabs. (Some applications, such as word processors, provide commands for making such conversions easy.) You can then add the document to a Newton Press book and reformat the table.

Creating borders

When formatting text, you can place borders around selected paragraphs or graphics to make them stand out or increase legibility. A single-line border appears around each paragraph to which you apply a border. (A paragraph is any amount of information (text or graphic) that ends with a carriage return.)



You can add borders around individual paragraphs.

To apply a border:

- 1 **Select the text you want to place a border around.**
- 2 **Choose Border from the Format menu.**

To remove a border, select the text or graphic that has the border and choose Border again from the Format menu.

Inverting text

To make headings and specific paragraphs of text stand out, you can invert the text so that it appears as white text against a black background. Inverting text is especially useful for creating distinctive headings in your books.



To invert selected text:

- 1 **Select the text you want to invert.**
- 2 **Choose Invert from the Format menu.**

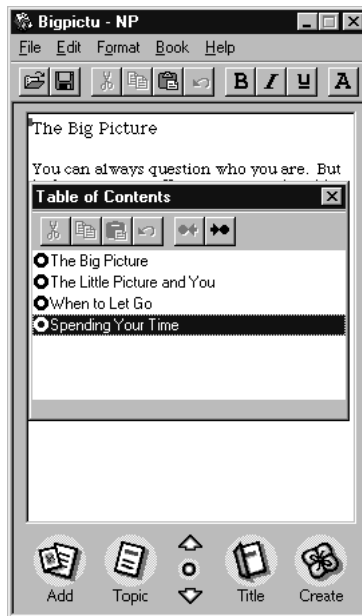
To change inverted text back to normal, select the text and choose Invert from the Format menu again.

4

Creating a Table of Contents



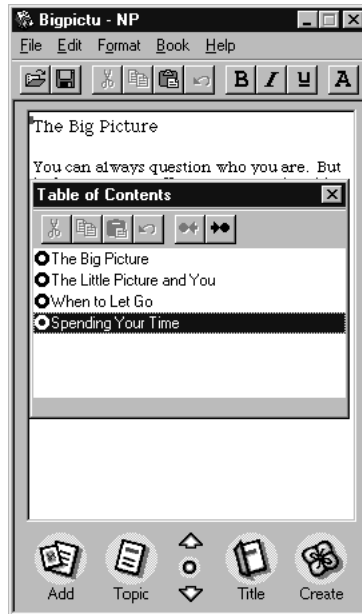
You can give readers a convenient way to view different topics in a book quickly by creating a table of contents. The Newton Press application provides a Table of Contents window that can list book headings or topics.



When readers open the Table of Contents window on their Newton PDAs, they can tap a topic and have that page of your document instantly appear. You don't have to create a table of contents for a book, but it provides an overview of the topics in a book and a simple and efficient method for readers to go to specific topics.

Using the Table of Contents window

The Table of Contents window lists any table of contents topics that you've added to the current book.



To open the Table of Contents window:

- Click the Overview button on the Newton Press window, or choose Table of Contents from the Book menu.

To close the Table of Contents window:

- Click the Overview button again on the Newton Press window, or click the close box on the Table of Contents window.

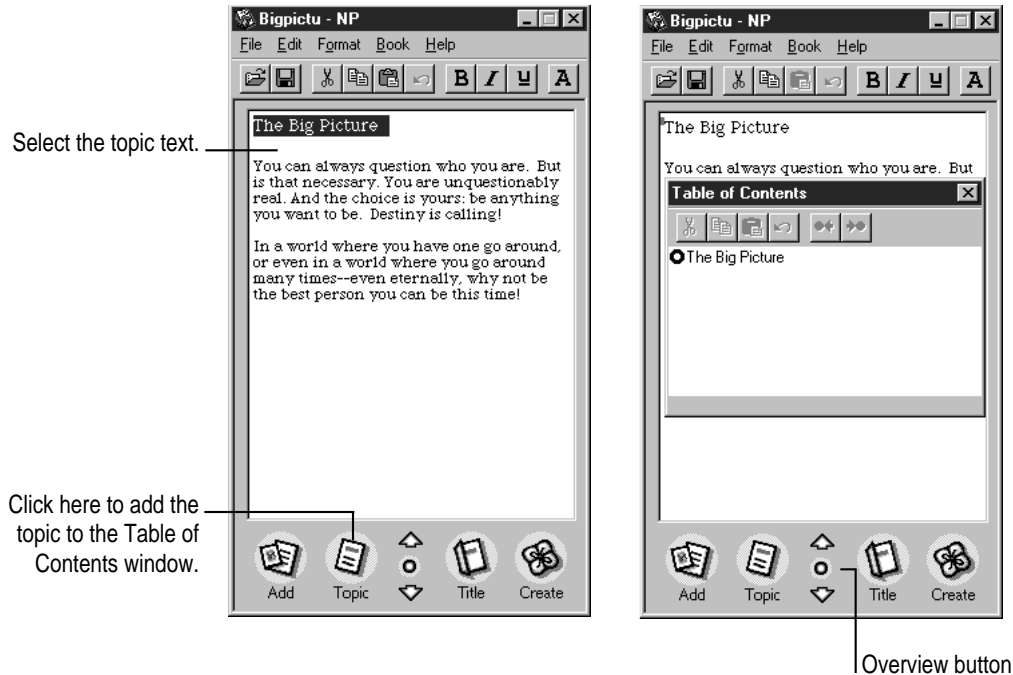
To follow a topic in the Table of Contents window to its destination in the book:

- **Double-click the round button before the topic.**

You can select and edit topics in the window and change the levels of the table of contents. You can add new topics or delete topics. You can create a table of contents after you're finished working on the book, or add topics to the table of contents as you go.

Adding topics to the Table of Contents window

You can add as many topics to a table of contents as you want. Once you add a topic, the Table of Contents window opens automatically showing you the new topic.



A topic marker is always added to the beginning of a paragraph. A paragraph is any amount of information (text or graphic) that ends with a carriage return. If the paragraph that you want to mark as a topic extends across pages, you must position the insertion point on the page where the paragraph begins.

To add a topic to the table of contents:

- 1 Click in the text, or select the text in the book that you want added to the table of contents.**

You can also click the text, without selecting anything, to add an untitled topic to the table of contents. You can then select the untitled topic and change it to the text you want.

- 2 Click the Topic button, or choose New Topic from the Book menu.**

The Table of Contents window appears and the new topic is added to the list. The topic is automatically inserted in correct order within the list of other topics. If no text is selected when you add a topic, an untitled topic is added to the Table of Contents window that you can then edit.

Viewing topic markers in a book

You can view markers in a book that show where table of contents topics link.

To see markers for table of contents topics in a book:

- **Choose Show Indicators from the Format menu.**

To hide the markers, choose Hide Indicators from the Format menu.

Adding topics automatically

You can have the Newton Press application automatically add a topic to the table of contents each time you import a file into your book. The application will add a single entry using the file name of the imported file. You can edit and change this topic later, if you want. For more information about setting the application to add a table of contents topic for an imported file, see Chapter 7, “Setting Preferences.”

Editing topics in the Table of Contents window

You can select and edit the topics in the Table of Contents window. You can also change a topic's level in the table of contents.

To edit a topic or change its level in the table of contents:

- 1** Click the **Overview** button on the **Newton Press** screen to open the **Table of Contents** window.
- 2** Select and edit the topic you want to change, or drag it left or right to change the topic's level.

You can also click the **Toolbar** buttons to change the topic level.

Deleting topics from the Table of Contents window

When you delete information from a book, the corresponding table of contents topics are also deleted. You can also remove topics from the Table of Contents window when necessary.

To delete a topic from the table of contents:

- 1** Click the **Overview** button on the **Newton Press** screen to open the **Table of Contents** window.
- 2** Click the topic you want to delete.
- 3** Press the **Delete** key.

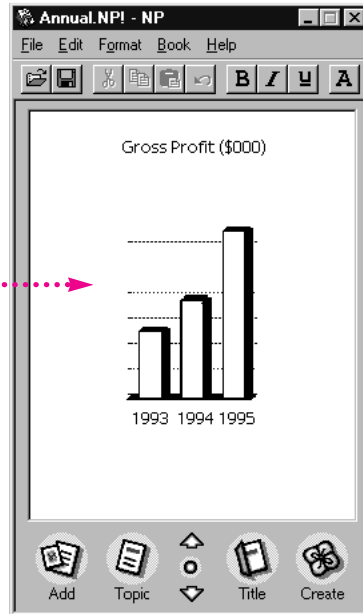
5

Linking



In some books, text may refer to information that appears on another page. For example, a paragraph may refer to a table at the end of a document. With a Newton book, you can create instant cross-references to other parts of a book by linking. Linking paragraphs or graphics allows the reader to tap a paragraph or graphic and instantly see the cross-referenced information.

Tap here to display another page of the book.



You can use linking as a convenient way to show appendixes, tables, definitions, charts or graphics, notes or footnotes—any information that you think a reader might want to refer to when viewing a page.

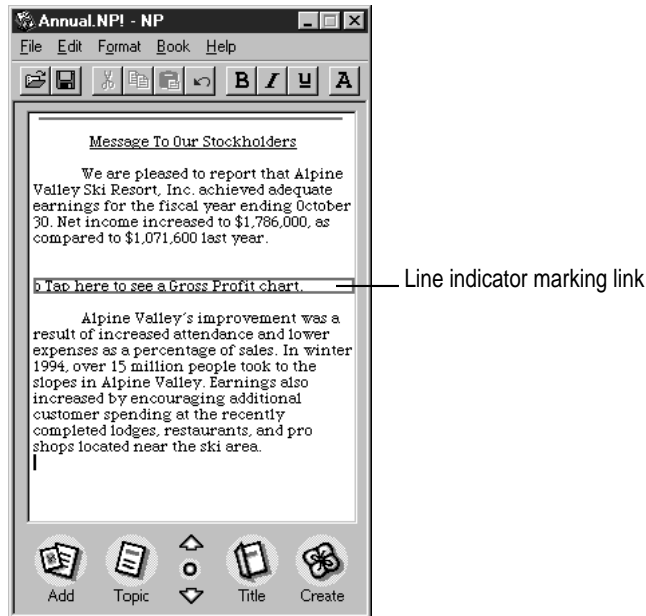
Creating links

Links allow you to easily move from one paragraph or graphic to a related portion of your document. If you want, you can create two links from one part of a book to another and back again to allow readers to switch easily between information.

When you create a link, you see a line indicator drawn around the linked text or graphic.

A link indicator is always added to the beginning of a paragraph. A paragraph is any amount of information (text or graphic) that ends with a carriage return. If the paragraph that you want to mark as a link extends across pages, you must position the insertion point on the page where the paragraph begins.

Newton PDA users reading your book will not see the indicator. You should provide instructions or graphics that indicate a link. For example, you can create a paragraph that says, “Tap here to see ...” and create a link to a table somewhere else in the book. Readers using the Newton PDA can see the linked information by tapping your instruction text.



If you add or delete information in the book—changing the page location of linked information—the application maintains the correct link and still displays the correct information.

If you later delete information in the book that contains a linked paragraph, the link is broken.

To create a link:

- 1 Click the paragraph or graphic that you want to link to another page.
- 2 Choose **Make Link** from the **Book** menu.

The **Make Link** window appears, providing instructions for completing the link.

- 3 Use the Go to Page window, the up or down arrows, or the Table of Contents window to display the page that holds the destination of the link.**

The pointer changes to indicate that you are in the process of linking. A window also appears instructing you about the next steps of the procedure. You can click the Cancel Link button to stop the linking procedure, if necessary.

- 4 Click a paragraph or graphic to complete the link.**
- 5 To return to the origin of the link, choose Return to Link from the Book menu.**

Choosing Return to Link from the Book menu returns you to the starting point of the link. However, it does not create a return link.

If you want a reader of your Newton book to have an easy way to return to the start of a link, repeat the linking procedure, this time creating a return link.

Viewing links

As you work on your computer, you can display or hide the indicators around linked text or graphics as you work. The line indicating a link is not visible to the reader of a book using a Newton PDA.

To display the indicators around links:

- **Choose Show Indicators from the Format menu.**

To hide link indicators, choose Hide Indicators from the Format menu.

Breaking links

To break a link:

- 1 Click to place the insertion point in the paragraph that is the starting point of a link.**
- 2 Choose Break Link from the Book menu.**

If you choose the Undo command from the Edit menu immediately after deleting the item, you can restore the link.

Checking links

As you create a book, you may want to check the links between parts of your book. Checking links helps ensure that you haven't mistakenly linked unrelated information or made links that lead to the wrong destination.

To check links:

- 1 Choose Show Indicators from the Format menu if links are not visible.**
- 2 Click the linked paragraph that you want to check.**
- 3 Choose Follow Link from the Book menu to go to the destination of the link.**

Newton Press displays the linked information.

6

Creating and Installing Book Packages



When you finish creating a Newton book on your computer, you create the final book package that you can download to a Newton PDA. You can then distribute the book package to Newton PDA users.

Creating a book package

Before creating a final book package, make sure you have

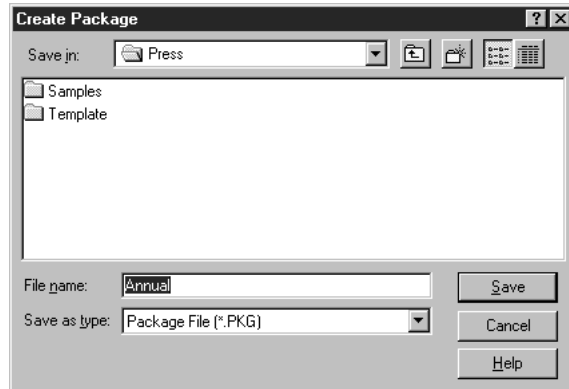
- finalized the format of your document, checking the layout of pages
- checked that the table of contents and linked pages work as you expect
- specified a book title and provided other identifying information about your book
- given your book package a unique title and long name, because you cannot install a package on a Newton PDA if it already has a package with the same title and long name

To create a book package:

- 1 **Click the Create button in the Newton Press window, or choose Create Package from the File menu.**

A window appears.

- 2 **Type a name for your book package in the File Name box.**



Choose a location for your book package on your hard disk or in a directory, if you want.

- 3 **Click Save.**

Installing a package on a Newton PDA

You can install book packages as well as other kinds of Newton packages on a Newton PDA. To install a package, you must connect the Newton PDA to your computer or network. For instructions for connecting your device and computer, see Chapter 1, “Getting Started.”

Also be sure that you’ve identified the type of connection you have in the Preferences window of the Newton Press application. For more information about selecting connection preferences, see Chapter 7, “Setting Preferences.”

By the way: Newton Press automatically installs the book package when you create it. To turn off automatic installation, see Chapter 7, “Setting Preferences.”

The next section describes how to install book packages if you don't choose to use automatic installation.

Preparing the computer

To install a package on your Newton PDA, do the following on your computer:

- 1 **Choose Install Package from the File menu.**

The Install Package window appears.





- 2 **Click the name of the book package that you want to install.**
- 3 **Click Open.**

Newton Press then waits for you to establish a connection from your Newton PDA.

Preparing the Newton PDA

To install a package on your Newton PDA, do the following on your Newton PDA:

- 1 **Open the Extras Drawer** .
- 2 **Tap Connection** .

A connection slip appears.

- 3 **Select the type of connection you have, and tap Connect.**

IMPORTANT If your Newton PDA uses a version of the Newton operating system earlier than 2.0, select the “Macintosh Serial” connection option. Do not select the “DOS or Windows PC” connection option.

The package is installed on the Newton PDA.

7

Setting Preferences



You can set preferences so that the Newton Press application creates books in the easiest and most convenient way for you. You can use preference settings to

- preset the application to use a specific font and font size for text in books
- specify whether you should be notified about fonts that need to be substituted automatically when you add a document to a book
- specify whether file names are added to a book's table of contents when you add a file
- specify whether a book package is automatically installed on a Newton PDA after you create it
- specify the communications port used by the computer and Newton PDA to communicate
- specify a directory in which book packages will be saved when you create them by dragging and dropping

Selecting preference settings

To set Newton Press preferences, you choose Preferences from the Edit menu. The Preferences window appears.



Text preferences

You can specify the font and font size that Newton Press is preset to use in your documents. You can also set the type of quotation marks used as you type text with the application.



The computer keyboard produces quotation marks for both opening and closing double quotation marks (") and single quotation marks ('). You can set the Newton Press application to automatically use curly opening and closing quotation marks (“ ” or ‘ ’) as you type.

To select font characteristics and use curly quotation marks in a book:

- 1 **Click the Text tab, if necessary.**

The Text options appear.

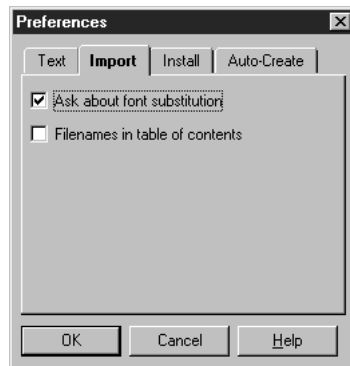
- 2 **Click the Smart Quotes option until a mark appears to turn on curly quotation marks.**

- 3 **Select the font and font size you want from the Font and Size drop-down lists.**

Each new book you start is preset to use your font selections.

Import preferences

Newton PDAs can display three fonts: Espy Sans, Geneva, and New York. Documents that you import into a book may use a variety of other fonts. To have text using such fonts appear correctly on a Newton PDA, you must change the fonts in a book to one of the three that Newton PDAs use.



You can have the Newton Press application automatically substitute Newton PDA fonts for the text you paste or add to a document. You can also have the application display a Font Substitution window that allows you to choose the font substitutions you want made.

To have the Font Substitution window appear each time a decision about font substitution is required:

- 1 Click the Import tab, if necessary.**

The Import options appear.

- 2 Select the “Ask about font substitution” option.**

If you want font substitution done without notifying you, deselect the “Ask about font substitution” option (no mark in checkbox).

When you add documents into a book, you can have Newton Press automatically add a topic to the table of contents. Newton Press will add the name of the imported file to the table of contents.

To have Newton Press add file names to the table of contents:

- 1 Click the Import tab, if necessary.**

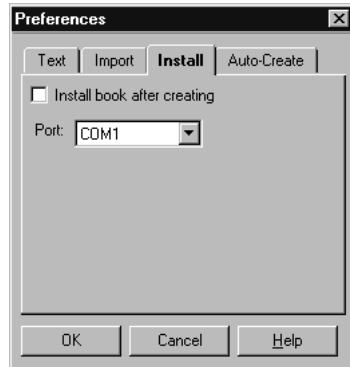
The Import options appear.

- 2 Click the box next to “Filenames in table of contents” until a checkmark appears.**

Leave this option deselected (no mark) when you don't want the application to place file names in the table of contents.

Install and connection preferences

When you drag a file onto the Newton Press application icon, the application can create a book and automatically install it on your Newton PDA. To automatically install books this way, the “Install book after creating” option must be selected in the Preferences window.



You also must have the Newton PDA connected to your computer and ready for the installation of a package.

To set Newton Press to install a package automatically on your Newton PDA:

- 1 **Click the Install tab, if necessary.**

The Install options appear.

- 2 **Click the “Install book after creating” checkbox until a checkmark appears.**

After you connect a cable to one of your computer serial ports, you must specify which communication port you used. You specify the port by selecting a port from the Port drop-down list.

To specify to which port your serial cable is connected:

- 1 **Click the Install tab, if necessary.**

The Install options appear.

- 2 **Select the communications port that you used to connect the serial cable to the computer.**

For more information about getting your Newton PDA ready to install a package, see Chapter 1, “Getting Started,” and Chapter 6, “Creating and Installing Book Packages.”

Location for saved packages

You can specify a directory into which Newton Press places your newly created books. When you create a book by dragging a document onto the Newton Press application icon, Newton Press places the newly created book in this directory.



To set the directory:

- 1 **Click the Auto-Create tab, if necessary.**

The Auto-Create option appears.

- 2 **Click the Change Directory button.**

A window appears in which you can select a directory.

- 3 **Find and click the directory name you want, and click OK.**

The name of the selected directory now appears in the window.

8

Viewing Your Book on a Newton PDA



When you install a book package on a Newton PDA, the package appears with its own icon and title. When you open the book, the Newton Book Reader application, built into your Newton PDA, launches, enabling you to view the book on a Newton PDA.

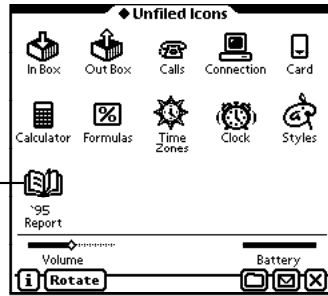
Using Newton Book Reader, you can

- open a Newton book
- move from page to page to view the document
- open a table of contents and jump to a specific topic
- set bookmarks to move quickly to a particular page whenever you want
- make annotations on the text
- copy and paste text
- print or fax the Newton book

Opening a book on a Newton PDA

You can only have one Newton book open at a time. The book icon is in the Extras Drawer.

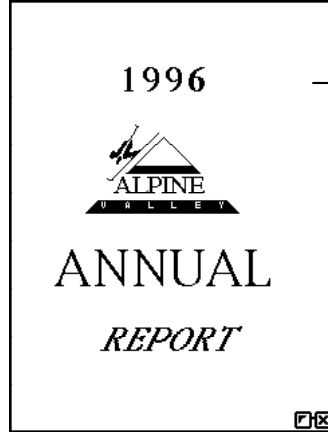
An example of a book icon installed in the internal memory.



To open a Newton book:

- 1 Tap the Extras Drawer and locate the Newton book icon.
- 2 Tap the book icon.

The open book appears on the screen.



An example of a digital book.

These controls may appear slightly different depending on the version of the Newton operating system on your Newton PDA.

Viewing pages

You can move page by page through a document.

To move forward or backward through a book:

- Tap the up or down arrows to turn the page.

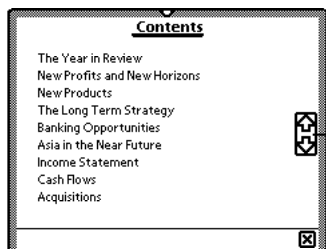
Using the table of contents

A Newton book may have a table of contents that lists the topics in the book. You can quickly view a particular topic by tapping it.

To use the table of contents to see a specific topic:

- 1 Tap the Overview button.

The table of contents appears listing the topics of the book. You can tap the scroll arrows on the right side to move through the table of contents or the up and down arrows on the Newton PDA screen, if necessary.




Use these scroll arrows to move up and down in the table of contents.

These scroll arrows may not appear depending on the version of the Newton operating system on your Newton PDA.

- 2 Tap the topic you want to view.

If there are subtopics in the table of contents, the main topic appears in bold text. Tap the main topic to see the subtopics.

- 3 If desired, tap a subtopic in the list.

To close the table of contents without choosing a topic, tap the  in the bottom-right corner of the slip.

Using Newton Book Reader controls

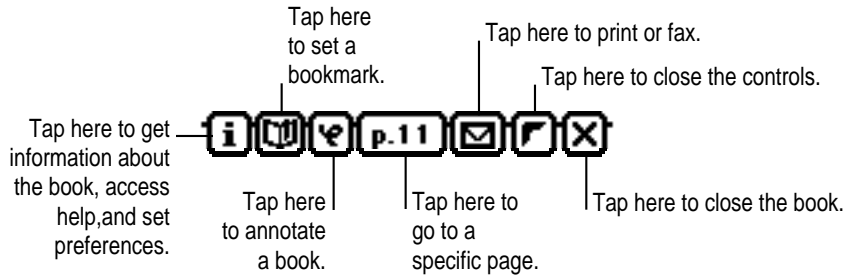
When a book is open, two small buttons may appear in the bottom-right corner of the document. To see the Newton Book Reader controls, tap the button on the left.



Tap here to open the Newton Book Reader controls.

Note: These buttons may appear slightly different or not at all, depending on the type of Newton PDA and the version of the Newton operating system that your PDA uses.

These controls allow you to move to a specific page by writing a page number or setting a bookmark.



Note: If you are using a version of the Newton operating system earlier than version 2.0, the information button may not appear and the other control buttons may look slightly different.

You can mark up or make notes on a book and hide or display these annotations whenever you want. You can also print or fax the book if you connect the Newton PDA to a printer or fax modem.


Going to a specific page

When the controls appear, the number of the currently displayed page appears in the page number button.

To move to a specific page:

- 1 Tap the page number button.
A slip appears.
- 2 Write the number of the page you want to see.



To close the slip without moving to a different page, tap .

Setting a bookmark

To set a bookmark:

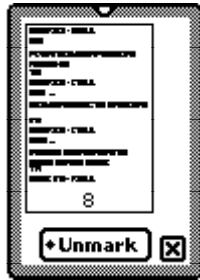
- 1 Display the page you want to mark.
- 2 Tap the control button to open Newton Book Reader controls, if they are not already open.
- 3 Tap the **Bookmark** button.

A slip appears.



4 Tap the “Mark page” button.

A new image for that page is added to the bookmark slip.



Note: If you are using a version of the Newton operating system earlier than version 2.0, the Unmark button does not appear.

If you don't want to create a new bookmark, tap the at the bottom-right corner of the slip.

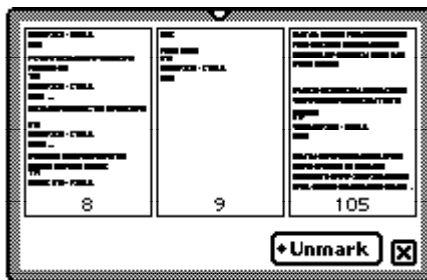
If you create more than six bookmarks, the last bookmark is added to the slip and the first bookmark you created is erased.

Displaying marked pages

To display a marked page:

1 Tap the Bookmark button.

A slip appears.



- 2 Tap the image of the page you want to see.

The slip disappears and the page you selected is shown on the screen.

Removing bookmarks

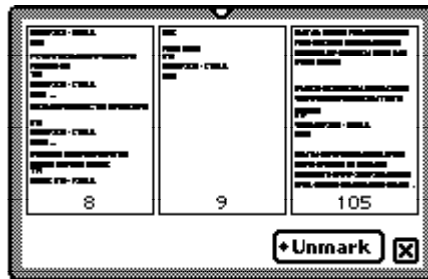
You can remove bookmarks when you want.

Note: If you are using a version of the Newton operating system earlier than version 2.0, the Unmark button does not appear on the Bookmark slip and you cannot eliminate specific bookmarks. When the bookmark slip holds six bookmarks, adding a new bookmark replaces one of the old ones.

To erase a bookmark:

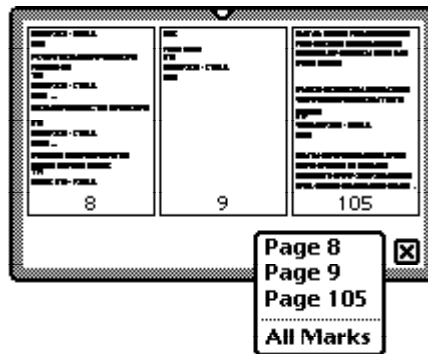
- 1 Tap the Bookmark button.

The bookmark slip appears.



- 2 Tap Unmark.

A list appears.



- 3 Tap the page you want to unmark or tap All Marks to erase all bookmarks.

The picture of the unmarked page disappears from the slip.

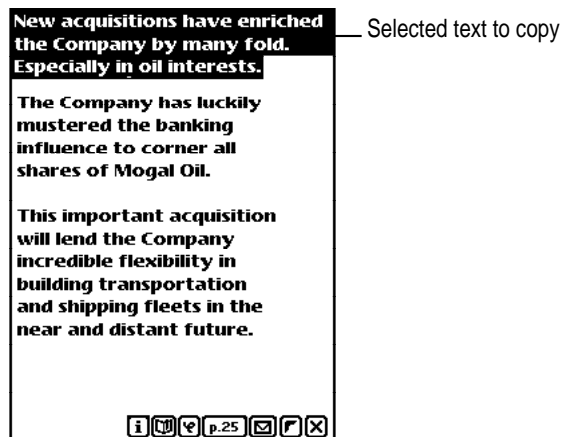
Copying parts of a book

You can select and copy parts of a book and move the copied text to another application.

To copy parts of a Newton book:

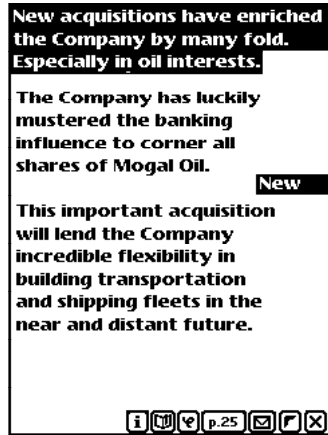
- 1 Go to the part you want to copy.
- 2 To select the item, hold the pen down on or near the item until a heavy mark appears and you hear a squeak. Then draw the highlighting mark over or around the item.

Your Newton PDA places a box around the selected item.




- 3 Drag the selected item to the side, top, or bottom of the screen.

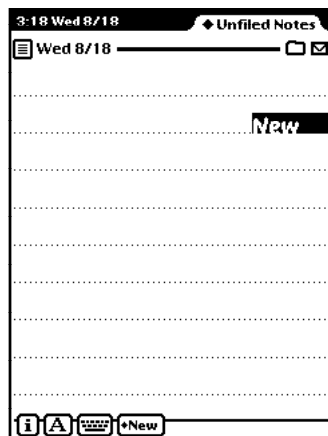
The item becomes a small box, waiting for you to place it in another document.



Selected text becomes a box.

- 4 Tap the  to close the book.
- 5 Open the item where you want the selected information to appear.

The small box indicating the selected item appears.

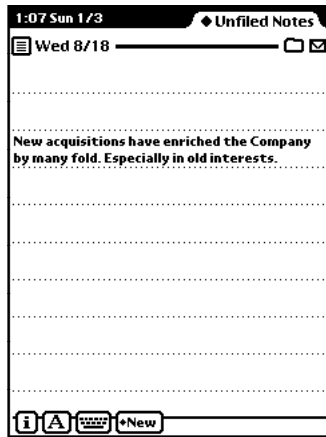


The box with the selected information appears.

6 Drag the box where you want it to be placed.

7 Tap the selection to deselect it.

The information appears where you placed it.



Annotating books

You can add your own annotations to a book by tapping the Markup button.

You cannot edit a book on a Newton PDA. You can, however, add notes by writing, drawing, or typing text with the on-screen keyboard. You can also hide your annotations. After marking up a book, you can print it or fax it with your annotations.

To annotate a book:

1 Tap the Markup button.

2 Make the annotations you want.



You can write, draw, or use the on-screen keyboard.

To hide your annotations, tap the Markup button again.

Printing and faxing a book

You can print or fax all or part of a book when your Newton PDA is connected to a printer or fax modem. If you annotated the book, your annotations will be shown as well.

To print or fax a book:

1 Connect your Newton PDA to a printer, a fax modem, or a fax modem card.

See your Newton PDA manual for information about how to connect the device to a printer or fax modem.

2 Open the book you want to print or fax.

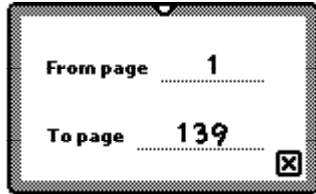
3 Tap the control button to see the Book Reader controls.

4 Tap the Routing button.

- 5 In the list that appears, tap **Print Book or Fax**.

A page number slip appears on top of the print or fax slip.

- 6 Write the page numbers you want to print or fax.



- 7 Tap to close the page number slip.
- 8 Enter the appropriate information in the print or fax slip.
- 9 Tap **Print Book or Fax**, then tap **Now or Later**.

For more detailed information about printing or faxing, see the manual that came with your Newton PDA.

Closing a Newton book

To close the book:

- Tap in the bottom of the window.



Tap here to close the book.

9

Troubleshooting



This chapter provides solutions to problems commonly encountered when installing the Newton Press software and using it to create or download book packages. If you have a problem, try the suggestions in this chapter. If none of the solutions fix the problem, contact 1-800-SOS-APPL for additional help.

Problems installing the software

If you had problems installing the Newton Press software, check the following:

- Make sure that your computer is running Windows 3.1, Windows NT, or Window 95.
- Check the Readme file on the Installation disk for late-breaking information about your computer and installation.
- Try installing the software again. Follow the instructions exactly as given in Chapter 1, “Getting Started.” During installation, note any error message that appears and make corrections, if necessary.
- Make sure you have enough disk space (10 MB) required for installation.

Problems editing and formatting a book

The fonts appear distorted on the Newton Press screen.

The required fonts, Espy Sans, Geneva, and New York, are installed when you install the Newton Press software. Check that you have not removed one of these required fonts from your Newton Press directory. If you have, you can install the software again to reinstall the fonts.

I set a tab for some text, but the marker has disappeared from the Tab window.

When you set a tab, it only applies to the currently selected paragraph or paragraphs. If you click elsewhere, or select another paragraph, the tabs for that text appear.

I can't draw a border around or invert a single word in a paragraph.

You can only invert or draw borders around entire paragraphs, not selections within a paragraph.

When the Go to Page window appears, there is sometimes not a final page listed.

If you have recently added or deleted information to the book and Newton Press hasn't completed laying out all pages of the book, it cannot display the last page number.

I've selected my entire book, but I can't make the changes I want.

When you choose the Select All command from the Edit menu, you can only make font, font size, font style, and alignment changes to your book. Newton Press software requires that you make other formatting or editing changes on a page-by-page basis. If you are adding text to create a document, you can also format the text in the original application before you add it to a Newton book.

Problems adding documents to a book

I'm having trouble adding a document to my Newton Press book. What should I do?

Check that the document is in a format that Newton Press can add. See the Readme file installed with your Newton Press software for a list of formats that Newton Press can translate. If you don't see your application format listed, try saving your document in a format that is listed.

How do I get the Font Substitution window to appear again if I want to reimport a file a second time, or for new files that contain the same fonts?

To cancel your previous font substitution selections so that you can make new ones or change them, quit the application and then open it again. When you add files, the Font Substitution window reappears.

When adding a number of documents to a book, how can I easily find out where different documents start in my book?

Turn on the File Names in the Table of Contents option in the Preferences window. Then add your documents to the book. You can then open the Table of Contents window and a topic for each document that you added will appear in the Table of Contents.

Why am I losing information from a document when I add it to my Newton book?

When you add a document to a Newton book, Newton Press uses a translator to convert the document to information that a Newton PDA can use. Some application files may contain graphics or other types of information, such as footnotes, that cannot be translated. Check the original document for such information and copy and paste it into the book, if possible. Otherwise, try putting the information into a format that Newton Press can translate.

Problems installing a book package on a Newton PDA

I can't install a package on the Newton PDA.

First, check that you have correctly connected the Newton PDA and your computer. See Chapter 1, “Getting Started,” for instructions for connecting the two devices.

Also check that you have set the preferences that tell Newton Press the communications port that you are using. See Chapter 7, “Setting Preferences,” for an explanation about how to set the connection preferences.

On your Newton PDA, be sure you have selected the correct type of connection in the connection slip. Open the Extras Drawer and tap Connection to see this slip. If your Newton PDA does not have the Newton 2.0 operating system, you must select the “Macintosh Serial” connection type, instead of the “DOS or Windows PC” type.

Set up Newton Press on your computer to open a connection first, then try establishing a connection from your Newton PDA. If you try to establish a connection from the Newton PDA first, and then delay in using the Newton Press software to install a package, the Newton PDA may report an error because the computer has not responded quickly enough.

Make sure that the package that you're trying to install on a Newton PDA has a unique title and long name, different from those already on the Newton PDA. If a package on the Newton PDA has the same title and long name as the package you're installing, you won't be able to install the package.

Check the available memory on your Newton PDA to see if there is enough memory to hold a package.

I just dragged a file or files onto the Newton Press icon to have it automatically create a book and install the new package. But I don't see the package on my Newton PDA.

When you create a new package by dragging and dropping, the package takes on the name of one of the files that you dragged onto the application icon. Check in the Extra Drawers for a Newton book with the name of one of your files. It may be that you are looking for a Newton book with a name different from the one Newton Press gave it.

General questions

A message says that my computer is running out of memory.

Try closing other applications that may be open. Also, turn on virtual memory if it is not already on. See the Appendix for information about turning on your computer's virtual memory.

I removed some old files from the System directory and now Newton Press won't start up.

If you have recently removed files from your system, you may have removed files required by Newton Press. Reinstall the Newton Press software.



Appendix Setting Up Windows 3.1 for Newton Press



To run Newton Press with Windows 3.1, you must turn on your computer's file sharing and virtual memory functions, if they are not already on.

Turning on file sharing

To turn on file sharing each time you start up your computer, edit your Autoexec.bat file. Using an editor, such as Sysedit, open the Autoexec.bat file and add the following line:

```
c:\DOS\Share.exe
```

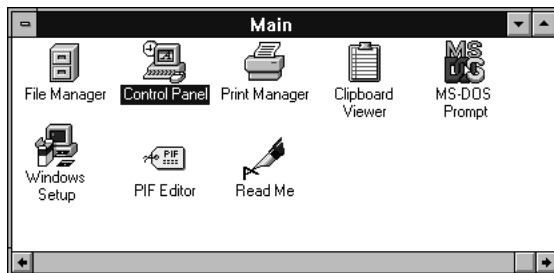
When the computer runs the Autoexec.bat file, it will turn on file sharing.

Turning on your computer's virtual memory

If your computer's virtual memory is not on, follow the steps in this procedure to turn it on.

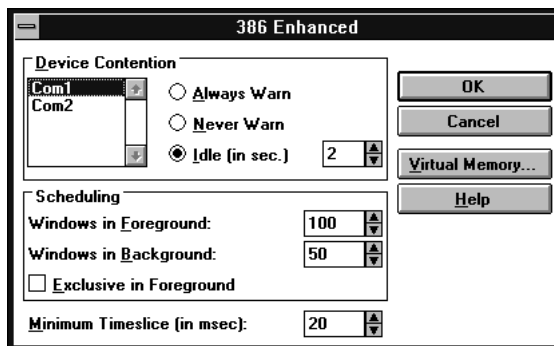
To turn on your computer's virtual memory:

- 1 In the Main window on your computer, double-click the Control Panel icon.



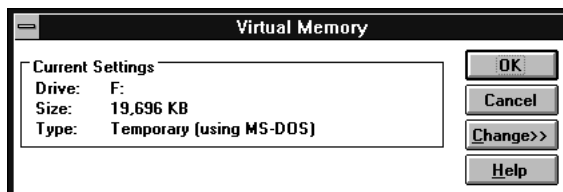
- 2 In the Control Panel window, double-click the 386 Enhanced icon.

The 386 Enhanced window appears on your computer.



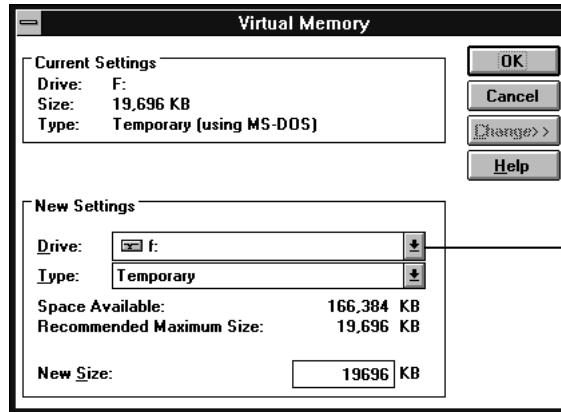
- 3 Click the Virtual Memory button.

Another window appears.



4 Click the Change button.

The window expands showing options that allow you to specify which disk drive should be used for virtual memory.



Click here to select a different disk to use for virtual memory.

The window shows the currently selected disk and the amount of available space for virtual memory.

5 Use the currently selected hard disk drive, or select a different drive from the Drive pop-down list, and click OK.

A message appears asking you to confirm that you want to change your settings.

6 Click Yes.

A message appears saying that you must restart Windows to put your virtual memory settings in effect.

7 Click Restart Windows.



Index

• • • • •

A

Add button 9, 22, 26, 39
Add command (File menu) 22, 26, 39
adding
 documents to a book 21–24, 81
 file names to the table of contents 23, 64, 81
 text to a book 17, 18
 topics to the Table of Contents window 47–48
Add window 9, 22, 26, 39
Align commands (Format menu) 40
aligning text 39–40
annotating books on the Newton PDA 70, 76–77
Apple-authorized dealer or service provider, purchasing a serial cable or adapter 3
arrows for moving through pages
 Newton PDA 69
 Newton Press window 10, 17, 19
Auto-Create tab, Preferences window 66
Autoexec.bat file 83
automatic installation of book packages, turning off 58

B

backup copy of a book 28
bitmapped files 25, 26
Bookmark button (Newton Book Reader) 70, 71, 72, 73
bookmarks, setting or removing on the Newton PDA 70, 71–73
Book menu
 Break Link command 54
 Go To Page command 19, 80
 Link command 55
 Make Link command 53
 New Topic command 48
 Return to Link command 54
 Table of Contents command 46
 Title command 26, 27
book packages. *See also* books
 creating 17, 57–58
 directory for storing, setting 66
 installing on the Newton PDA 12, 58–60
 opening 13
 saving books as 10–11, 14

- setting up the Newton PDA
 - to receive 12
 - working with on the Newton PDA 67–78
- books. *See also* book packages
 - adding text to 17, 18
 - bringing documents into 17, 20, 20–24
 - bringing graphics into 21, 24–26
 - creating 9–11, 15–29
 - dragging onto the Newton PDA 16
 - faxing or printing 70, 77–78
 - naming and identifying 26–28
 - navigating in 18–19
 - opening new books 17
 - opening on the Newton PDA 68
 - saving 10–11, 14
 - saving and opening work in progress 28–29
 - selecting icons for 26–28
 - specifying the title of 26–28
- borders
 - creating 43–44
 - troubleshooting 80
- Borders command (Format menu) 44
- breaking links 54
- Break Link command (Book menu) 54

C

- cables, serial 2, 3–4
- Cancel Link button 54
- centered text 39
- checking links 55
- closing
 - a book on the Newton PDA 70, 78
 - the Table of Contents window 46
- communications port on the Newton PDA
 - illustration 4
 - specifying 7–9, 65–66
- connecting the Newton PDA to your computer 3–4

- connections
 - setting preferences 7–9, 65–66
 - setting up on the Newton PDA 12, 16
 - troubleshooting 82
- contents of your Newton Press package 1
- Control Panel (Windows 3.1) 84–85
- Copy command (Edit menu) 26
- copying and pasting
 - graphics 20, 26
 - into template files 33
 - parts of a book 74–76
 - text 20
- Create button 11, 58
- Create Package command (File menu) 58
- Create Package window 58
- Create window 11
- creating
 - bookmarks 70, 71–73
 - book packages 17, 57–58
 - books 9–11, 15–29
 - borders 43–44
 - headers 36–37
 - links 52–54
 - return links 54
 - table of contents 45–49
 - tables 21, 42–43
- cross-references. *See* links
- curly quotation marks, preference setting 63
- customer support phone number 79

D

- deleting. *See* removing
- directory for storing book packages, setting 66
- displaying marked pages (Newton Book Reader) 72

- documents. *See also* files
 - bringing into a book 17, 20, 20–24
 - containing tables 42–43
 - saving and opening as work in progress 28–29
- Down arrow, Newton Press window 10
- dragging
 - books onto the Newton PDA 16
 - documents into the Newton Press window 23
 - files, troubleshooting 82
 - table of contents topics 49
 - tab markers 40, 41

E

- editing. *See also* formatting
 - graphics 25–26
 - table of contents topics 49
 - text 18, 32–33
 - troubleshooting 80
- Edit menu
 - Copy command 26
 - Paste command 26
 - Preferences command 8, 62
 - Select All command 18, 33, 37, 80
 - Undo command 54
- erasing. *See* removing
- Exit command (File menu) 14
- exiting Newton Press 14
- Extras Drawer
 - connections 12, 16, 60
 - installing book packages in 12
 - locating a book 13
 - opening a book 68

F

- faxing a book 70, 77–78
- file formats supported 22, 81
- File Manager, using to drag documents to the Newton PDA 16

- File menu
 - Add command 22, 26, 39
 - Create Package command 58
 - Exit command 14
 - Install Package command 59
 - New command 17
 - Open command 29
 - Save command 28
- file names
 - adding to the table of contents 23, 64, 81
 - saving your work and 28
- files. *See also* documents
 - installed with Newton Press 5, 82
 - removing from your system 82
- file sharing, turning on (Windows 3.1) 83
- Follow Link command (Book menu) 55
- fonts
 - troubleshooting 80
 - available on the Newton PDA 22, 33, 37
 - changing 37–38
 - preference settings 62–64
 - substituting 21, 22, 33, 38, 63–64
- Fonts command (Format menu) 38
- Font Substitution window 22, 38–39, 64
 - troubleshooting 81
- footnotes 21
- format changes, adding documents to a book and 20
- Format menu
 - Align command 40
 - Borders command 44
 - Fonts command 38
 - Header command 37
 - Hide Indicators command 48, 54
 - Insert Page Break command 35
 - Invert command 44
 - Remove Page Break command 35–36
 - Show Indicators command 35–36, 48, 54, 55
 - Show Tabs command 40, 41

- formatting
 - aligning text 39–40
 - creating borders 43–44
 - creating headers 36–37
 - creating tables 21, 42–43,
 - inserting page breaks 34–36
 - inverting text 44
 - overview 32–33
 - troubleshooting 80
 - using fonts 37–39
 - using tabs 40–41
 - using template files 33

G

- Go To Page command (Book menu) 19
- Go To Page window
 - displaying link destinations 54
 - troubleshooting 80
- graphics
 - bringing into a book 21, 24–26
 - copying and pasting 20
- graphics file translators 25

H

- hard disk space requirements 2, 6
- hardware requirements 2
- Header command (Format menu) 37
- headers, creating 36–37
- help, phone number for 79
- Hide Indicators (Format menu) 48, 54

I, J, K

- icons
 - Add 9
 - book (Newton PDA) 68
 - Connection 12
 - Create 11
 - Extras Drawer 12
 - Press.exe 16
 - selecting for a book 26–28

- identifying
 - a book 26–28
 - a page break 35
- importing documents
 - adding table of contents topics and 48
 - containing tables 42–43
- Import tab, Preferences window 63–64
- Insert Page Break command (Format menu) 35
- Install* disk 5
- installing
 - book packages on the Newton PDA 12, 58–60, 65
 - Newton Press 5–6, 79
- Install options 8–9
- Install Package command (File menu) 59
- Install Package window 59
- Install tab, Preferences window 65–66
- Invert command (Format menu) 44
- inverting text 44
 - troubleshooting 80

L

- Last Page button 19
- left-aligned text 39
- link indicators 52, 53, 54
- linking, overview 51–52
- links
 - breaking 54
 - checking 55
 - creating 52–54
 - restoring (undoing) 54
 - viewing 54
- location for saved packages, setting 66

M

- Make Link command (Book menu) 53
- margins 32
- marked pages. *See* bookmarks
- markers
 - for table of contents topics 47, 48
 - for tabs 40
- Mark page button (Newton Book Reader) 72
- Markup button (Newton Book Reader) 70, 76, 77
- memory
 - system requirements for 2
 - troubleshooting 82
 - virtual memory (Windows 3.1) 84–85
- moving through a document.
See navigating
- multiple documents, adding to a book 24

N

- naming
 - book packages 11, 82
 - books 26–28
 - work files 28
- navigating
 - in a book 18–19
 - in a document 33
 - on the Newton PDA 69
 - using the Table of Contents window 46–47
- New command (File menu) 17
- new page. *See* page breaks
- Newton Book Reader
 - annotating books 70, 76–77
 - closing a book 70, 78
 - controls illustrated 70
 - copying and pasting parts of a book 74–76

- going to a specific page 70, 71
- overview 67
- printing or faxing a book 70, 77–78
- setting or removing bookmarks 70, 71–73
- Newton books. *See* book packages; books
- Newton PDA
 - communication port 4
 - connecting to your computer 3–4
 - dragging a book onto 16
 - Extras Drawer 11–13, 16, 60, 68
 - installing book packages on 12, 58–60
 - opening a book on 68
 - setting up to receive a package 12
 - unplugging 14
 - working with book packages on 67–78
- Newton Press application window 7, 10, 17, 23, 32–33
- New Topic command (Book menu) 48
- 9-pin serial cable 2
- 9-pin serial port 3
- 9-pin to 8-pin connector 3
- 9-pin to 25-pin adapter 3

O

- opening
 - book packages 13
 - books on the Newton PDA 68
 - documents or books saved as work in progress 29
 - Newton Press 7
 - the Table of Contents window 46
- Open window 29
- operating system requirements 2
- Overview button 17, 46, 49
 - on the Newton PDA 69

P

- packages. *See* book packages
- page, going to a specific page 19
 - on the Newton PDA 70, 71
- page breaks
 - automatic 32
 - identifying 35
 - inserting or removing 34–36
- page number button (Newton Book Reader) 70, 71
- paragraph, defined 43, 48, 52
- Paste command (Edit menu) 26
- pasting
 - into template files 33
 - parts of a book on the Newton PDA 74–76
 - text and graphics 20
- Port install option 8–9
- ports
 - communication port on the Newton PDA 4
 - serial 2, 3–4
 - specifying the connection 7–9, 65–66
- Preferences command (Edit menu) 8, 62
- preference settings
 - adding file names to the table of contents 64, 81
 - communications port connections 65–66
 - directory to store saved book packages 66
 - font and font size 62–63
 - font substitution 39, 63–64
 - installing books automatically 65
 - overview 61
 - quotation marks 62–63
- Preferences window 62, 81
- Press directory 6
- printing a book from the Newton PDA 70, 77–78
- Print Screen key, to capture a screen 26

Q

- quitting Newton Press 14
- quotation marks, preference settings 62–63

R

- RAM requirements 2
- Readme file
 - document and graphics formats supported 21
 - files installed with Newton Press 5, 82
 - late-breaking information 13, 79
 - template format files 33
 - translators 25
- Remove Page Break command (Format menu) 35–36
- removing
 - bookmarks (Newton Book Reader) 73
 - borders 44
 - files 82
 - headers 37
 - page breaks 35–36
 - table of contents topics 49
 - tab stops 41
- resizing graphics 25, 26
- restarting Windows 6
- restoring a broken link 54
- return links, creating 54
- Return to Link command (Book menu) 54
- right-aligned text 39
- Routing button (Newton Book Reader) 77
- ruler, setting tab stops on 41

S

- Save command (File menu) 28
- saved book packages, directory for storing 66
- Save window 28
- saving
 - a book as a package 10–11, 14
 - work in progress 24, 28
- scaling graphics 25
- screen captures 26
- scroll arrows
 - Newton PDA 69
 - Newton Press 10, 17, 19
- Select All command (Edit menu) 18, 33, 37
 - troubleshooting 80
- selecting text 18, 33
 - Newton Book Reader 74
- serial cables 2, 3–4
- serial ports 2, 3–4
- SETUP.EXE program 5
- Show Indicators command (Format menu) 35–36, 48, 54, 55
- Show Tabs command (Format menu) 40, 41
- Smart Quotes option 63
- starting Newton Press 7
 - troubleshooting 82
- substituting fonts 21, 22, 33, 38
 - preference settings 63–64
 - troubleshooting 81
- system requirements 2

T

- table of contents
 - adding file names to 23, 64, 81
 - adding topics to 47–48
 - changing a topic level 49
 - deleting topics 49
 - editing topics 49
 - opening and closing the window 46
 - overview 45–46
 - using on the Newton PDA 69
 - viewing 17, 46
- Table of Contents command (Book menu) 46
- Table of Contents window 45–49
 - displaying link destinations 54
- tables, creating or adding to a book 21, 42–43
- tabs
 - creating tables and 42–43
 - displaying markers 40
 - setting and removing 40–41
 - troubleshooting 80
- Tab window 41
- technical support phone number 79
- template files for formatting 33
- text. *See also* documents
 - aligning 39–40
 - copying and pasting 20
 - editing 32–33
 - inverting 44
 - typing 17, 18
- Text tab, Preferences window 62–63
- Title command (Book menu) 26, 27
- Title window 26–28
- Topic button 47, 48
- topics, Table of Contents
 - adding 47–48
 - editing and deleting 49
- translators supported by Newton Press 25, 81

- troubleshooting
 - adding documents to a book 81
 - customer support phone number 79
 - dragging files 82
 - editing text or borders 80
 - fonts appear distorted 80
 - Go To Page window 80
 - installation problems 6, 79
 - installing a book package onto the Newton PDA 82
 - memory availability 82
 - naming book packages 82
 - Select All command (Edit menu) 80
 - starting Newton Press 82
 - tab settings 80
 - transferring a book to the Newton PDA 13
- turning on file sharing and virtual memory (Windows 3.1) 83–85
- 25-pin serial cable 2
- 25-pin serial port 3

U

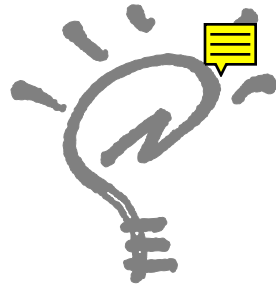
- Undo command (Edit menu) 54
- undoing a broken link 54
- Unmark button (Newton Book Reader) 73
- unplugging the Newton PDA 14
- Up arrow, Newton Press window 10

V

- viewing
 - books on the Newton PDA 67–78
 - links 54
 - tab markers 40
 - topic markers 48
- virtual memory, turning on (Windows 3.1) 84–85

W, X, Y, Z

- windows (Newton Press)
 - Add 9, 22, 26
 - Create 11
 - Create Package 58
 - Font Substitution 22, 38, 64, 81
 - Go To Page 80
 - Install Package 59
 - main application window 7, 10, 17, 23
 - Open 29
 - Preferences 62–66, 81
 - Save 28
 - Tab 41
 - Table of Contents 45–49
 - Title 26–28
- Windows (operating system)
 - restarting 6, 85
 - setting up Windows 3.1 for Newton Press 83–85
- work-in-progress files, saving and opening 28–29



Newton

Newton Press User's Guide

for Windows



 Apple Computer, Inc.

© 1996 Apple Computer, Inc. All rights reserved.

Under the copyright laws, this manual may not be copied, in whole or in part, without the written consent of Apple. Your rights to the software are governed by the accompanying software license agreement.

The Apple logo is a trademark of Apple Computer, Inc., registered in the U.S. and other countries. Use of the “keyboard” Apple logo (Option-Shift-K) for commercial purposes without the prior written consent of Apple may constitute trademark infringement and unfair competition in violation of federal and state laws.

Every effort has been made to ensure that the information in this manual is accurate. Apple is not responsible for printing or clerical errors.

Apple Computer, Inc.
1 Infinite Loop
Cupertino, CA 95014-2084
408-996-1010
<http://www.apple.com>

Apple, the Apple logo, LaserWriter, Macintosh, and Newton are trademarks of Apple Computer, Inc., registered in the U.S. and other countries.

The light bulb logo is a trademark of Apple Computer, Inc.

Adobe, Adobe Illustrator, Adobe Photoshop, and PostScript are trademarks of Adobe Systems Incorporated, which may be registered in certain jurisdictions.

Helvetica and Times are registered trademarks of Linotype Company.

PC Paintbrush is a registered trademark of ZSoft Corporation.

QMS is a registered trademark of QMS, Inc.

QuarkXPress is a registered trademark of Quark, Inc.

Tektronix is a registered trademark of Tektronix, Inc.

Windows is a trademark of Microsoft Corporation.

Simultaneously published in the United States and Canada.

Mention of third-party products is for informational purposes only and constitutes neither an endorsement nor a recommendation. Apple assumes no responsibility with regard to the performance or use of these products.



Contents



About Newton Press

What is Newton Press?	vii
What is a Newton book?	viii
How do I create a book?	x
Reading the book on a Newton PDA	xii

1 Getting Started 1

In this package	1
System requirements	2
Connecting your Newton PDA to your computer	3
Attaching the cable	3
Installing Newton Press	5
Installation troubleshooting	6
Starting Newton Press	7
Getting your computer ready	7
Creating a book	9
Getting your Newton PDA ready	12
Locating the new book	13
Problems?	13
Exiting Newton Press	14

2 Creating a Book 15

Dragging a book onto a Newton PDA	16
Creating a new book	17
Navigating in your book	18
Copying and pasting	20
Bringing documents into a book	20
Adding a new document	21
Dragging a document to a book for editing	23
Adding multiple documents to a book file	24
Bringing graphics into a book	24
Naming and identifying a book	26
Saving and opening your book	28
Saving your book	28
Opening your book	29

3 Formatting Your Newton Book 31

About the Newton Press application window	32
Inserting a page break	34
Removing a page break	35
Creating a header	36
Using fonts	37
Adding documents that use different fonts	38
Aligning text	39
Using tabs	40
Creating tables	42
Creating borders	43
Inverting text	44

4	Creating a Table of Contents	45
	Using the Table of Contents window	46
	Adding topics to the Table of Contents window	47
	Viewing topic markers in a book	48
	Adding topics automatically	48
	Editing topics in the Table of Contents window	49
	Deleting topics from the Table of Contents window	49
5	Linking	51
	Creating links	52
	Viewing links	54
	Breaking links	54
	Checking links	55
6	Creating and Installing Book Packages	57
	Creating a book package	57
	Installing a package on a Newton PDA	58
	Preparing the computer	59
	Preparing the Newton PDA	60
7	Setting Preferences	61
	Selecting preference settings	62
	Text preferences	62
	Import preferences	63
	Install and connection preferences	65
	Location for saved packages	66

8 Viewing Your Book on a Newton PDA 67

Opening a book on a Newton PDA 68

Viewing pages 69

Using the table of contents 69

Using Newton Book Reader controls 70

 Going to a specific page 71

 Setting a bookmark 71

 Displaying marked pages 72

 Removing bookmarks 73

Copying parts of a book 74

Annotating books 76

Printing and faxing a book 77

Closing a Newton book 78

9 Troubleshooting 79

Problems installing the software 79

Problems editing and formatting a book 80

Problems adding documents to a book 80

Problems installing a book package on a Newton PDA 81

General questions 82

Appendix Setting up Windows 3.1 for Newton Press 83

Turning on file sharing 83

Turning on your computer's virtual memory 84

Index 87



About Newton Press



What is Newton Press?

Newton Press is an ideal application for creating and distributing electronic documents as Newton books that can be reviewed and annotated on a Newton PDA. With Newton Press, you can create read-only electronic documents, complete with text and graphics, that anyone with a Newton PDA can use.

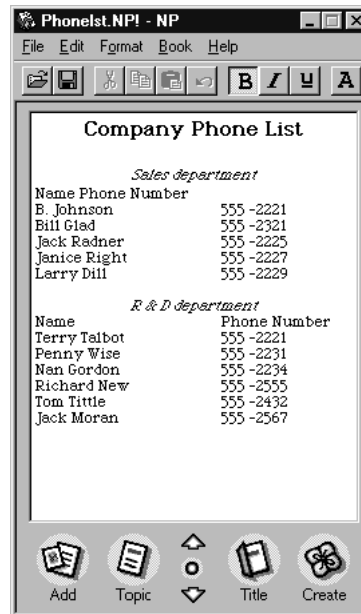
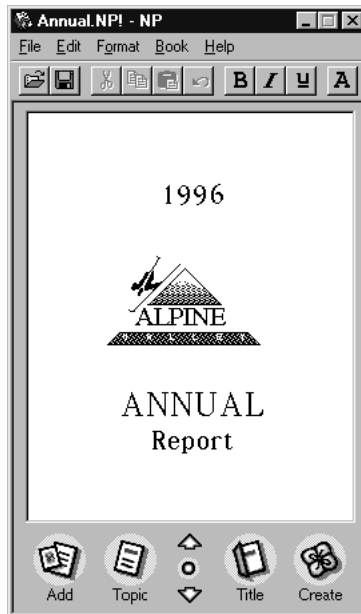
You can quickly create Newton books by combining text and graphics from other applications into your Newton Press documents. You can also type and edit text as you create a Newton book and easily format it to match the screen size and display characteristics of Newton PDAs.

After creating an electronic document on your computer, you can save it as a book package and install it on Newton PDAs. You can use the Newton Press application or use other Newton applications, such as the Newton Backup Utility, to install your packages on Newton PDAs. In fact, Newton Press provides ways to quickly create books and install them on a Newton PDA automatically without typing or formatting documents yourself. So if you just want to move information from your computer onto your Newton PDA, you can do so in a few easy steps.

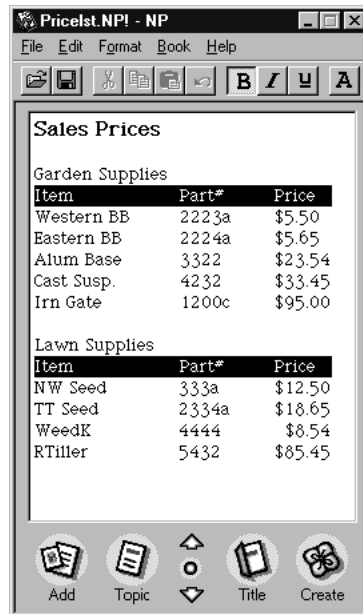
What is a Newton book?

A Newton book is an electronic document created for viewing on a Newton PDA. With Newton Press, you can create and publish a variety of documents such as business reports, reference materials, price sheets, product listings, and tables for display on Newton PDAs.

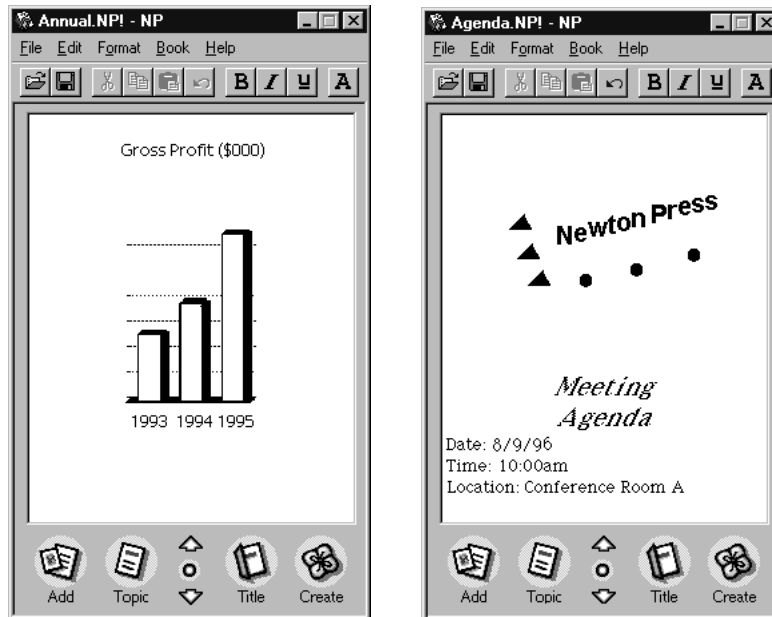
You can create company reports and documents that someone with a Newton PDA can keep for easy reference. You can also distribute Newton books to employees with reference tables of prices, products, or other lists of information.



You can create company directories and other lists that Newton PDA users can refer to on the job or in the field, taking advantage of the portability of the Newton PDA.



And you can create documents with graphics and charts that provide Newton PDA users with effective and persuasive visual tools for communicating information.



Newton Press enables you to create a wide variety of books that can effectively convey your information.

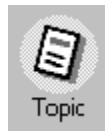
How do I create a book?

Creating a book is roughly a four-step process:

- You first open the Newton Press application and type or add the content of your book. You can then format the book to look the way you want it.



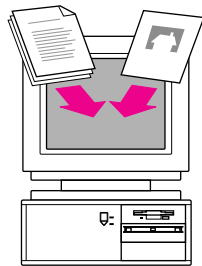
- You can create a table of contents that readers can use to move about the different topics of a book.



- You can name and record identifying information about your book.



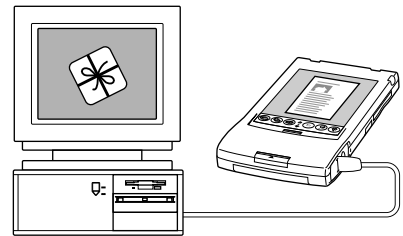
- And last, you save the book as a package that you can install on a Newton PDA.



Add documents to your book, including text and graphics.



Type and edit text and format your book for easy readability.



Create a book package and install it on a Newton PDA.

With Newton Press, you can easily take the text and graphics from many commonly used applications on your computer and place them in a new book. Documents that you frequently use can most often be converted to Newton books.

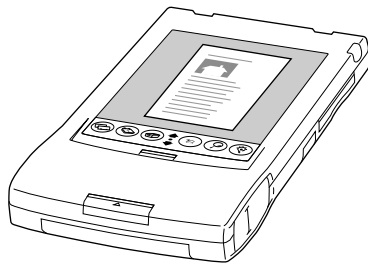
If you find it easier, you can format your documents in your computer application to use the fonts and line widths that fit a Newton PDA screen before bringing them into Newton Press.

As you work with a book in Newton Press, you can see how it will appear on a Newton PDA screen. You can then edit and format the book to give it a polished look that's easy to read. You can also create books that have special features such as tables of contents and linked pages that let readers quickly jump to the information they want to see.

Once your book is complete, you then save the book as a package. By connecting a Newton PDA to your computer, you can transfer your book package to the Newton PDA where readers can open and view it at any time.

Reading the book on a Newton PDA

When you install a book on a Newton PDA, users can open books, view and annotate pages, and even fax and print the document.



For more information about using the Newton Book Reader, see Chapter 8, “Viewing Your Book on a Newton PDA.”